

PPCEL Rabbit mAb

Catalog # AP76665

Product Information

Application	WB, IHC-P, IP
Primary Accession	Q4J6C6
Reactivity	Human, Mouse, Rat, Hamster
Host	Rabbit
Clonality	Monoclonal Antibody
Calculated MW	83927

Additional Information

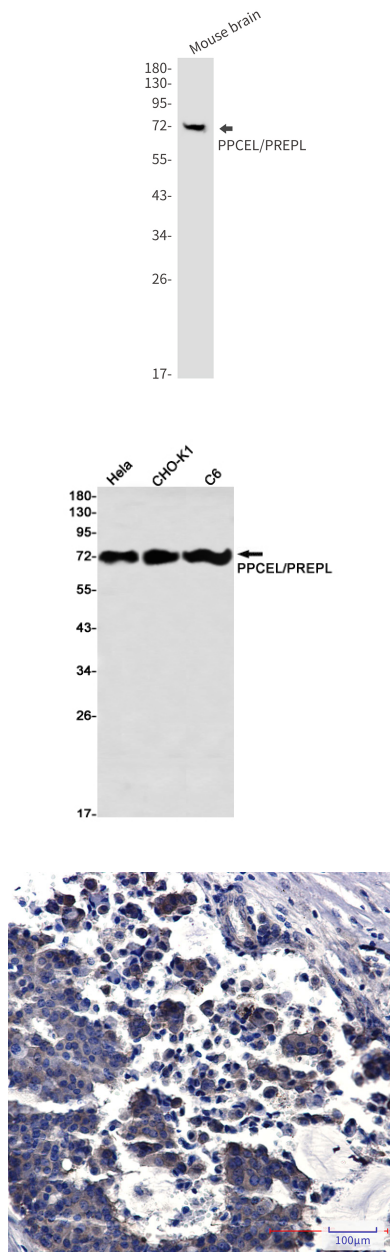
Gene ID	9581
Other Names	PREPL
Dilution	WB~~1/500-1/1000 IHC-P~~N/A IP~~1/20
Format	50mM Tris-Glycine(pH 7.4), 0.15M NaCl, 40%Glycerol, 0.01% sodium azide and 0.05% BSA.
Storage	Store at 4°C short term. Aliquot and store at -20°C long term. Avoid freeze/thaw cycles.

Protein Information

Name	PREPL
Synonyms	KIAA0436
Function	Serine peptidase whose precise substrate specificity remains unclear (PubMed: 16143824 , PubMed: 16385448 , PubMed: 28726805). Does not cleave peptides after a arginine or lysine residue (PubMed: 16143824). Regulates trans-Golgi network morphology and sorting by regulating the membrane binding of the AP-1 complex (PubMed: 23321636). May play a role in the regulation of synaptic vesicle exocytosis (PubMed: 24610330).
Cellular Location	Cytoplasm, cytosol. Golgi apparatus, trans-Golgi network {ECO:0000250 UniProtKB:Q8C167}. Cytoplasm, cytoskeleton {ECO:0000250 UniProtKB:Q8C167}. Golgi apparatus {ECO:0000250 UniProtKB:Q8C167}. Nucleus Note=Co-localizes with AP-1 in the trans-Golgi network (By similarity) Co-localizes with MAP2 and ACTB on the cytoskeleton (By similarity) Co-localizes with STX6 and GOSR2 at the Golgi apparatus (By similarity). {ECO:0000250 UniProtKB:Q8C167}
Tissue Location	Expressed in pyramidal neurons of the temporal cortex and neocortex (at

protein level) (PubMed:23485813). Widely expressed (PubMed:15913950, PubMed:16385448). Expressed at higher level in brain, skeletal muscle, heart and kidney (PubMed:15913950, PubMed:16385448). Expressed at the endplates in the neuromuscular junction (PubMed:24610330).

Images



Please note: All products are 'FOR RESEARCH USE ONLY. NOT FOR USE IN DIAGNOSTIC OR THERAPEUTIC PROCEDURES'.