

PPCEL Rabbit mAb

Catalog # AP76666

Product Information

Application	WB, IP, ICC
Primary Accession	Q4J6C6
Reactivity	Human, Mouse, Rat
Host	Rabbit
Clonality	Monoclonal Antibody
Calculated MW	83927

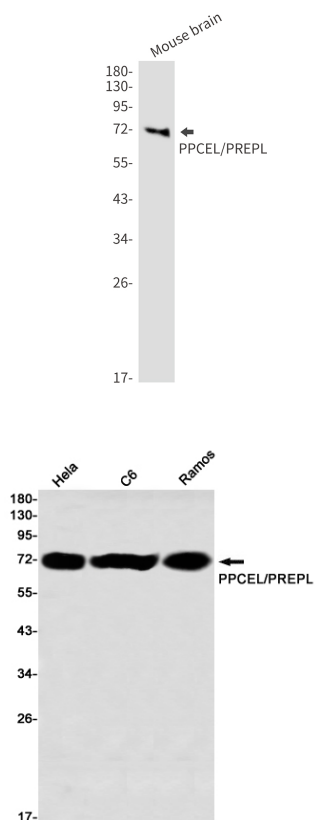
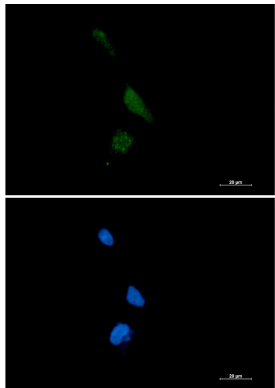
Additional Information

Gene ID	9581
Other Names	PREPL
Dilution	WB~~1/500-1/1000 IP~~1/20 ICC~~N/A
Format	Liquid

Protein Information

Name	PREPL
Synonyms	KIAA0436
Function	Serine peptidase whose precise substrate specificity remains unclear (PubMed: 16143824 , PubMed: 16385448 , PubMed: 28726805). Does not cleave peptides after a arginine or lysine residue (PubMed: 16143824). Regulates trans-Golgi network morphology and sorting by regulating the membrane binding of the AP-1 complex (PubMed: 23321636). May play a role in the regulation of synaptic vesicle exocytosis (PubMed: 24610330).
Cellular Location	Cytoplasm, cytosol. Golgi apparatus, trans-Golgi network {ECO:0000250 UniProtKB:Q8C167}. Cytoplasm, cytoskeleton {ECO:0000250 UniProtKB:Q8C167}. Golgi apparatus {ECO:0000250 UniProtKB:Q8C167}. Nucleus Note=Co-localizes with AP-1 in the trans-Golgi network (By similarity) Co-localizes with MAP2 and ACTB on the cytoskeleton (By similarity) Co-localizes with STX6 and GOSR2 at the Golgi apparatus (By similarity). {ECO:0000250 UniProtKB:Q8C167}
Tissue Location	Expressed in pyramidal neurons of the temporal cortex and neocortex (at protein level) (PubMed:23485813). Widely expressed (PubMed:15913950, PubMed:16385448). Expressed at higher level in brain, skeletal muscle, heart and kidney (PubMed:15913950, PubMed:16385448). Expressed at the endplates in the neuromuscular junction (PubMed:24610330).

Images



Please note: All products are 'FOR RESEARCH USE ONLY. NOT FOR USE IN DIAGNOSTIC OR THERAPEUTIC PROCEDURES'.