

# Prohibitin Rabbit mAb

Catalog # AP76671

## Product Information

---

<b>Application</b>	WB, IHC-P, IHC-F, IP, ICC
<b>Primary Accession</b>	<a href="#">P35232</a>
<b>Reactivity</b>	Human, Rat
<b>Host</b>	Rabbit
<b>Clonality</b>	Monoclonal Antibody
<b>Calculated MW</b>	29804

## Additional Information

---

<b>Gene ID</b>	5245
<b>Other Names</b>	PHB1
<b>Dilution</b>	WB~~1/500-1/1000 IHC-P~~N/A IHC-F~~N/A IP~~N/A ICC~~N/A
<b>Format</b>	Liquid

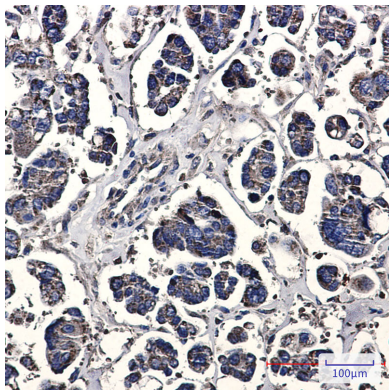
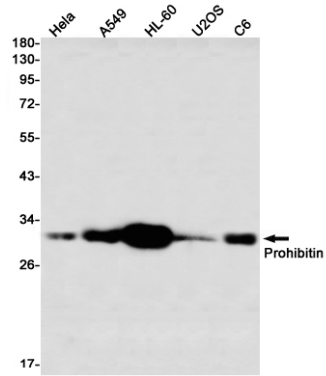
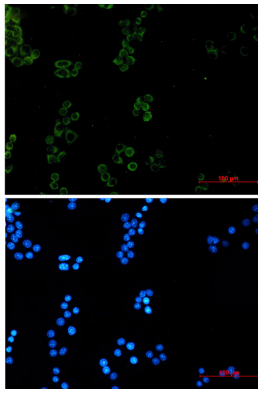
## Protein Information

---

<b>Name</b>	PHB1 {ECO:0000303 PubMed:28017329, ECO:0000312 HGNC:HGNC:8912}
<b>Function</b>	Protein with pleiotropic attributes mediated in a cell- compartment- and tissue-specific manner, which include the plasma membrane-associated cell signaling functions, mitochondrial chaperone, and transcriptional co-regulator of transcription factors in the nucleus (PubMed: <a href="#">11302691</a> , PubMed: <a href="#">20959514</a> , PubMed: <a href="#">28017329</a> , PubMed: <a href="#">31522117</a> ). Plays a role in adipose tissue and glucose homeostasis in a sex-specific manner (By similarity). Contributes to pulmonary vascular remodeling by accelerating proliferation of pulmonary arterial smooth muscle cells (By similarity).
<b>Cellular Location</b>	Mitochondrion inner membrane. Nucleus. Cytoplasm. Cell membrane
<b>Tissue Location</b>	Widely expressed in different tissues.

## Images

---



Please note: All products are 'FOR RESEARCH USE ONLY. NOT FOR USE IN DIAGNOSTIC OR THERAPEUTIC PROCEDURES'.