

RanGAP1 Rabbit mAb

Catalog # AP76687

Product Information

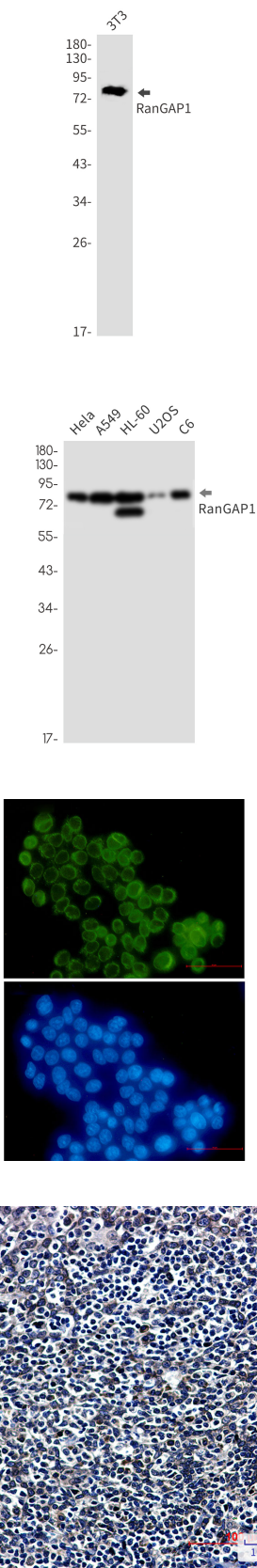
Application	WB, IHC-P, IHC-F, IP, ICC
Primary Accession	P46060
Reactivity	Human, Mouse, Rat
Host	Rabbit
Clonality	Monoclonal Antibody
Calculated MW	63542

Additional Information

Gene ID	5905
Other Names	RANGAP1
Dilution	WB~~1/500-1/1000 IHC-P~~N/A IHC-F~~N/A IP~~1/20 ICC~~N/A
Format	Liquid

Protein Information

Name	RANGAP1
Synonyms	KIAA1835, SD
Function	GTPase activator for RAN (PubMed: 16428860 , PubMed: 8146159 , PubMed: 8896452). Converts cytoplasmic GTP-bound RAN to GDP-bound RAN, which is essential for RAN-mediated nuclear import and export (PubMed: 27160050 , PubMed: 8896452). Mediates dissociation of cargo from nuclear export complexes containing XPO1, RAN and RANBP2 after nuclear export (PubMed: 27160050).
Cellular Location	Cytoplasm. Nucleus, nucleoplasm. Nucleus envelope. Chromosome, centromere, kinetochore. Cytoplasm, cytoskeleton, spindle. Note=Cytoplasmic during interphase Detected at the nuclear envelope during interphase (PubMed:11854305, PubMed:15037602). Targeted to the nuclear pores after sumoylation (PubMed:11854305). During mitosis, associates with mitotic spindles, but is essentially not detected at the spindle poles (PubMed:11854305, PubMed:15037602). Association with kinetochores appears soon after nuclear envelope breakdown and persists until late anaphase (PubMed:11854305). Mitotic location also requires sumoylation (PubMed:11854305).
Tissue Location	Highly expressed in brain, thymus and testis.



Please note: All products are 'FOR RESEARCH USE ONLY. NOT FOR USE IN DIAGNOSTIC OR THERAPEUTIC PROCEDURES'.