

RASA1 Rabbit mAb

Catalog # AP76690

Product Information

Application	WB, IHC-P
Primary Accession	P20936
Reactivity	Human
Host	Rabbit
Clonality	Monoclonal Antibody
Calculated MW	116403

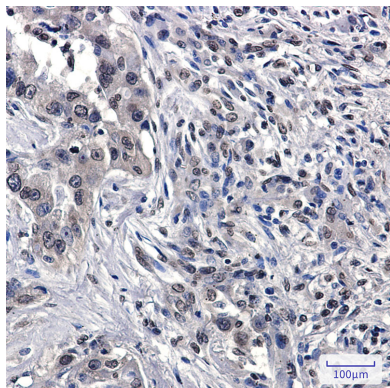
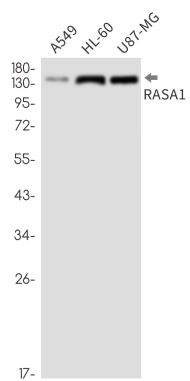
Additional Information

Gene ID	5921
Other Names	RASA1
Dilution	WB~~1/500-1/1000 IHC-P~~N/A
Format	50mM Tris-Glycine(pH 7.4), 0.15M NaCl, 40%Glycerol, 0.01% sodium azide and 0.05% BSA.
Storage	Store at 4°C short term. Aliquot and store at -20°C long term. Avoid freeze/thaw cycles.

Protein Information

Name	RASA1
Synonyms	GAP, RASA
Function	Inhibitory regulator of the Ras-cyclic AMP pathway. Stimulates the GTPase of normal but not oncogenic Ras p21; this stimulation may be further increased in the presence of NCK1.
Cellular Location	Cytoplasm.
Tissue Location	In placental villi, detected only in the trophoblast layer (cytotrophoblast and syncytiotrophoblast). Not detected in stromal, endothelial or Hofbauer cells (at protein level)

Images



Please note: All products are 'FOR RESEARCH USE ONLY. NOT FOR USE IN DIAGNOSTIC OR THERAPEUTIC PROCEDURES'.