

# SEC24D Rabbit mAb

Catalog # AP76705

## Product Information

Application	WB
Primary Accession	<a href="#">O94855</a>
Reactivity	Human, Mouse, Rat
Host	Rabbit
Clonality	Monoclonal Antibody
Calculated MW	113010

## Additional Information

Gene ID	9871
Other Names	SEC24D
Dilution	WB~~1/500-1/1000
Format	50mM Tris-Glycine(pH 7.4), 0.15M NaCl, 40%Glycerol, 0.01% sodium azide and 0.05% BSA.

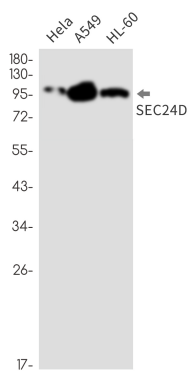
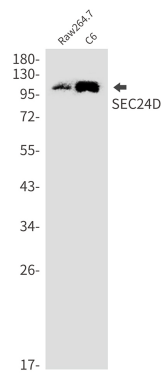
## Protein Information

Name	SEC24D ( <a href="#">HGNC:10706</a> )
Function	Component of the coat protein complex II (COPII) which promotes the formation of transport vesicles from the endoplasmic reticulum (ER). The coat has two main functions, the physical deformation of the endoplasmic reticulum membrane into vesicles and the selection of cargo molecules for their transport to the Golgi complex (PubMed: <a href="#">17499046</a> , PubMed: <a href="#">18843296</a> , PubMed: <a href="#">20427317</a> ). Plays a central role in cargo selection within the COPII complex and together with SEC24C may have a different specificity compared to SEC24A and SEC24B (PubMed: <a href="#">17499046</a> , PubMed: <a href="#">18843296</a> , PubMed: <a href="#">20427317</a> ). May more specifically package GPI-anchored proteins through the cargo receptor TMED10 (PubMed: <a href="#">20427317</a> ). May also be specific for IxM motif-containing cargos like the SNAREs GOSR2 and STX5 (PubMed: <a href="#">18843296</a> ).
Cellular Location	Cytoplasmic vesicle, COPII-coated vesicle membrane; Peripheral membrane protein {ECO:0000250 UniProtKB:P53992}; Cytoplasmic side {ECO:0000250 UniProtKB:P53992}. Endoplasmic reticulum membrane; Peripheral membrane protein {ECO:0000250 UniProtKB:P53992}; Cytoplasmic side {ECO:0000250 UniProtKB:P53992}. Cytoplasm, cytosol {ECO:0000250 UniProtKB:P53992}
Tissue Location	Ubiquitously expressed, with higher amounts in placenta, pancreas, heart and

liver.

## Images

---



Please note: All products are 'FOR RESEARCH USE ONLY. NOT FOR USE IN DIAGNOSTIC OR THERAPEUTIC PROCEDURES'.