

Semaphorin 7A Rabbit mAb

Catalog # AP76706

Product Information

Application	WB, IHC-P, IP
Primary Accession	O75326
Reactivity	Human
Host	Rabbit
Clonality	Monoclonal Antibody
Calculated MW	74824

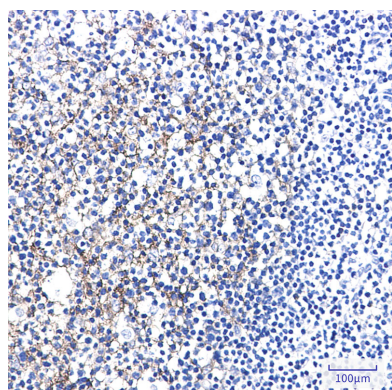
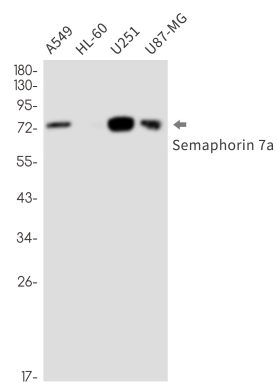
Additional Information

Gene ID	8482
Other Names	SEMA7A
Dilution	WB~~1/500-1/1000 IHC-P~~N/A IP~~N/A
Format	Liquid

Protein Information

Name	SEMA7A
Synonyms	CD108, SEMAL
Function	Plays an important role in integrin-mediated signaling and functions both in regulating cell migration and immune responses. Promotes formation of focal adhesion complexes, activation of the protein kinase PTK2/FAK1 and subsequent phosphorylation of MAPK1 and MAPK3. Promotes production of pro-inflammatory cytokines by monocytes and macrophages. Plays an important role in modulating inflammation and T-cell-mediated immune responses. Promotes axon growth in the embryonic olfactory bulb. Promotes attachment, spreading and dendrite outgrowth in melanocytes.
Cellular Location	Cell membrane; Lipid-anchor, GPI-anchor; Extracellular side. Note=Detected in a punctate pattern on the cell membrane of basal and supra-basal skin keratinocytes
Tissue Location	Detected in skin keratinocytes and on endothelial cells from skin blood vessels (at protein level). Expressed in fibroblasts, keratinocytes, melanocytes, placenta, testis, ovary, spleen, brain, spinal cord, lung, heart, adrenal gland, lymph nodes, thymus, intestine and kidney.

Images



Please note: All products are 'FOR RESEARCH USE ONLY. NOT FOR USE IN DIAGNOSTIC OR THERAPEUTIC PROCEDURES'.