

Septin 8 Rabbit mAb

Catalog # AP76707

Product Information

Application	WB, IP
Primary Accession	Q92599
Reactivity	Rat, Hamster
Host	Rabbit
Clonality	Monoclonal Antibody
Calculated MW	55756

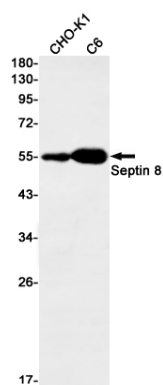
Additional Information

Gene ID	23176
Other Names	SEPTIN8
Dilution	WB~~1/500-1/1000 IP~~N/A
Format	Liquid

Protein Information

Name	SEPTIN8 (HGNC:16511)
Function	Filament-forming cytoskeletal GTPase (By similarity). May play a role in platelet secretion (PubMed: 15116257). Seems to participate in the process of SNARE complex formation in synaptic vesicles (By similarity).
Cellular Location	Cytoplasm {ECO:0000250 UniProtKB:B0BNF1}. Cytoplasm, cytoskeleton. Synapse {ECO:0000250 UniProtKB:B0BNF1}. Cell projection, axon {ECO:0000250 UniProtKB:B0BNF1}. Cytoplasmic vesicle, secretory vesicle, synaptic vesicle membrane {ECO:0000250 UniProtKB:B0BNF1}. Presynapse {ECO:0000250 UniProtKB:B0BNF1}. Note=Expressed in axons of immature neurons, localizes to synapses in mature neurons (By similarity). In platelets, found in areas surrounding alpha-granules (PubMed: 15116257) {ECO:0000250 UniProtKB:B0BNF1, ECO:0000269 PubMed: 15116257 }
Tissue Location	Widely expressed, including in brain, heart and platelets; most abundant in aorta. Isoform 2 is expressed at low levels in specific brain areas, such as occipital pole, frontal lobe, temporal lobe and putamen. Isoform 1 and 3 are highly expressed in specific brain areas, such as occipital pole, frontal lobe, temporal lobe and putamen. Isoform 2 is highly expressed in prostate, testis and ovary Isoform 1 and isoform 3 are expressed at low levels in prostate, testis and ovary.

Images



Please note: All products are 'FOR RESEARCH USE ONLY. NOT FOR USE IN DIAGNOSTIC OR THERAPEUTIC PROCEDURES'.