

Serine Racemase Rabbit mAb

Catalog # AP76708

Product Information

Application	WB, IP
Primary Accession	Q9GZT4
Reactivity	Human
Host	Rabbit
Clonality	Monoclonal Antibody
Calculated MW	36566

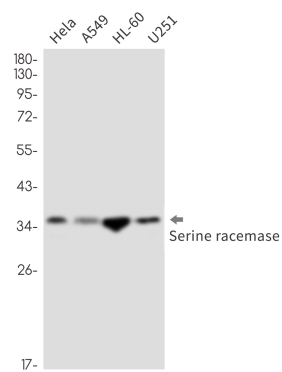
Additional Information

Gene ID	63826
Other Names	SRR
Dilution	WB~~1/500-1/1000 IP~~N/A
Format	Liquid

Protein Information

Name	SRR
Function	Catalyzes the synthesis of D-serine from L-serine (PubMed: 20106978 , PubMed: 23391306 , PubMed: 29277459). D-serine is a key coagonist with glutamate at NMDA receptors. Has dehydratase activity towards both L-serine and D-serine (By similarity).
Tissue Location	Expressed in the cerebellum, hippocampus, dorsolateral prefrontal cortex, and in motor neurons and glial cells of the lumbar spinal cord (at protein level) (PubMed:17880399, PubMed:24138986). Increased in the dorsolateral prefrontal cortex of schizophrenic patients (at protein level) (PubMed:17880399). Brain: expressed at high levels in hippocampus and corpus callosum, intermediate levels in substantia nigra and caudate, and low levels in amygdala, thalamus, and subthalamic nuclei (PubMed:15193426). Expressed in heart, skeletal muscle, kidney, and liver (PubMed:15193426)

Images



Please note: All products are 'FOR RESEARCH USE ONLY. NOT FOR USE IN DIAGNOSTIC OR THERAPEUTIC PROCEDURES'.