

Sortilin Rabbit mAb

Catalog # AP76717

Product Information

Application	WB, IHC-P
Primary Accession	Q99523
Reactivity	Human, Rat
Host	Rabbit
Clonality	Monoclonal Antibody
Calculated MW	92068

Additional Information

Gene ID	6272
Other Names	SORT1
Dilution	WB~~1/500-1/1000 IHC-P~~N/A
Format	Liquid

Protein Information

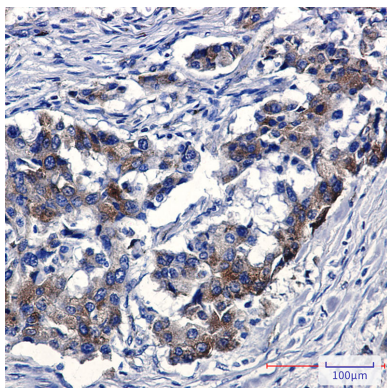
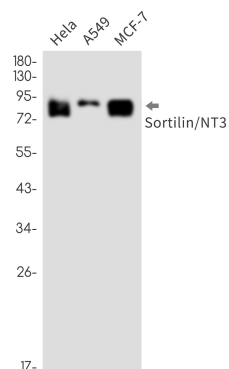
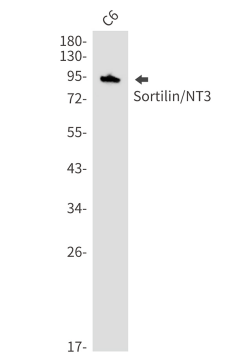
Name	SORT1 (HGNC:11186)
Function	<p>Functions as a sorting receptor in the Golgi compartment and as a clearance receptor on the cell surface. Required for protein transport from the Golgi apparatus to the lysosomes by a pathway that is independent of the mannose-6-phosphate receptor (M6PR). Lysosomal proteins bind specifically to the receptor in the Golgi apparatus and the resulting receptor-ligand complex is transported to an acidic prelysosomal compartment where the low pH mediates the dissociation of the complex (PubMed:16787399). The receptor is then recycled back to the Golgi for another round of trafficking through its binding to the retromer. Also required for protein transport from the Golgi apparatus to the endosomes. Promotes neuronal apoptosis by mediating endocytosis of the proapoptotic precursor forms of BDNF (proBDNF) and NGFB (proNGFB). Also acts as a receptor for neurotensin. May promote mineralization of the extracellular matrix during osteogenic differentiation by scavenging extracellular LPL. Probably required in adipocytes for the formation of specialized storage vesicles containing the glucose transporter SLC2A4/GLUT4 (GLUT4 storage vesicles, or GSVs). These vesicles provide a stable pool of SLC2A4 and confer increased responsiveness to insulin. May also mediate transport from the endoplasmic reticulum to the Golgi.</p>
Cellular Location	Golgi apparatus, Golgi stack membrane; Single-pass type I membrane protein. Endosome membrane; Single-pass type I membrane protein. Endoplasmic

reticulum membrane; Single-pass type I membrane protein. Nucleus membrane; Single-pass type I membrane protein. Cell membrane; Single-pass type I membrane protein; Extracellular side Lysosome membrane; Single-pass type I membrane protein. Note=Localized to membranes of the endoplasmic reticulum, endosomes, Golgi stack, lysosomes and nucleus. A small fraction of the protein is also localized to the plasma membrane. May also be found in SLC2A4/GLUT4 storage vesicles (GSVs) in adipocytes Localization to the plasma membrane in adipocytes may be enhanced by insulin

Tissue Location

Expressed in brain and prostate (at protein level). Expressed at high levels in brain, spinal cord, heart, skeletal muscle, thyroid, placenta and testis. Expressed at lower levels in lymphoid organs, kidney, colon and liver.

Images



Please note: All products are 'FOR RESEARCH USE ONLY. NOT FOR USE IN DIAGNOSTIC OR THERAPEUTIC PROCEDURES'.