

TACC3 Rabbit mAb

Catalog # AP76729

Product Information

Application	WB, IHC-P
Primary Accession	Q9Y6A5
Reactivity	Human
Host	Rabbit
Clonality	Monoclonal Antibody
Calculated MW	90360

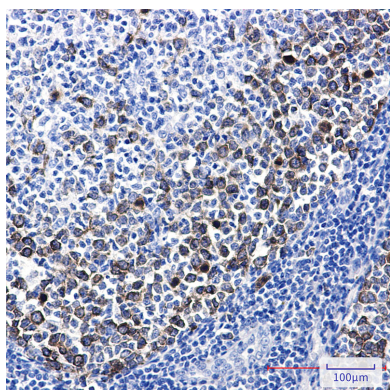
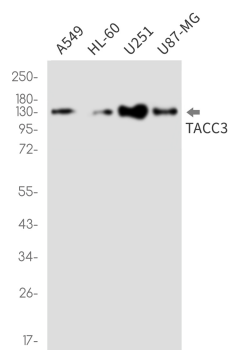
Additional Information

Gene ID	10460
Other Names	TACC3
Dilution	WB~~1/500-1/1000 IHC-P~~N/A
Format	Liquid

Protein Information

Name	TACC3
Synonyms	ERIC1
Function	<p>Plays a role in the microtubule-dependent coupling of the nucleus and the centrosome. Involved in the processes that regulate centrosome-mediated interkinetic nuclear migration (INM) of neural progenitors (By similarity). Acts as a component of the TACC3/ch- TOG/clathrin complex proposed to contribute to stabilization of kinetochore fibers of the mitotic spindle by acting as inter- microtubule bridge. The TACC3/ch-TOG/clathrin complex is required for the maintenance of kinetochore fiber tension (PubMed:21297582, PubMed:23532825). May be involved in the control of cell growth and differentiation. May contribute to cancer (PubMed:14767476).</p>
Cellular Location	<p>Cytoplasm. Cytoplasm, cytoskeleton, microtubule organizing center, centrosome. Cytoplasm, cytoskeleton, spindle. Cytoplasm, cytoskeleton, spindle pole {ECO:0000250 UniProtKB:Q9PTG8}. Note=In complex with CKAP5 localized to microtubule plus-ends in mitosis and interphase. In complex with CKAP5 and clathrin localized to inter-microtubule bridges in mitotic spindles.</p>

Images



Please note: All products are 'FOR RESEARCH USE ONLY. NOT FOR USE IN DIAGNOSTIC OR THERAPEUTIC PROCEDURES'.