

# General Transcription Factor II I Rabbit mAb

Catalog # AP76735

## Product Information

Application	WB, IHC-P, IHC-F, ICC
Primary Accession	<a href="#">P78347</a>
Reactivity	Human
Host	Rabbit
Clonality	Monoclonal Antibody
Calculated MW	112416

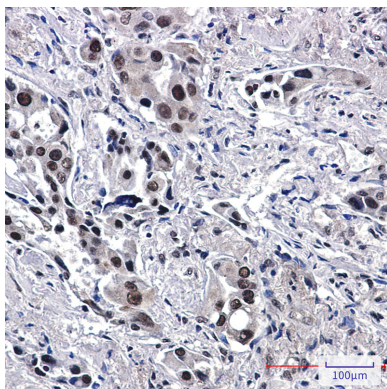
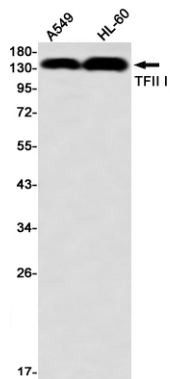
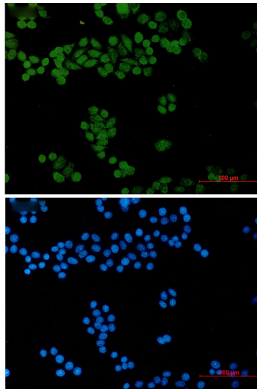
## Additional Information

Gene ID	2969
Other Names	GTF2I
Dilution	WB~~1/500-1/1000 IHC-P~~N/A IHC-F~~N/A ICC~~N/A
Format	Liquid

## Protein Information

Name	GTF2I
Synonyms	BAP135, WBSCR6
Function	Interacts with the basal transcription machinery by coordinating the formation of a multiprotein complex at the C-FOS promoter, and linking specific signal responsive activator complexes. Promotes the formation of stable high-order complexes of SRF and PHOX1 and interacts cooperatively with PHOX1 to promote serum-inducible transcription of a reporter gene driven by the C-FOS serum response element (SRE). Acts as a coregulator for USF1 by binding independently two promoter elements, a pyrimidine-rich initiator (Inr) and an upstream E-box. Required for the formation of functional ARID3A DNA- binding complexes and for activation of immunoglobulin heavy-chain transcription upon B-lymphocyte activation.
Cellular Location	Cytoplasm. Nucleus {ECO:0000255   PROSITE-ProRule:PRU00484, ECO:0000269   PubMed:10373551} Note=Colocalizes with BTK in the cytoplasm
Tissue Location	Ubiquitous. Isoform 1 is strongly expressed in fetal brain, weakly in adult brain, muscle, and lymphoblasts and is almost undetectable in other adult tissues, while the other isoforms are equally expressed in all adult tissues

## Images



Please note: All products are 'FOR RESEARCH USE ONLY. NOT FOR USE IN DIAGNOSTIC OR THERAPEUTIC PROCEDURES'.