

Transcription Initiation Factor IIB Rabbit mAb

Catalog # AP76736

Product Information

Application	WB, IP
Primary Accession	Q00403
Reactivity	Human, Mouse, Rat
Host	Rabbit
Clonality	Monoclonal Antibody
Calculated MW	34833

Additional Information

Gene ID	2959
Other Names	GTF2B
Dilution	WB~~1/500-1/1000 IP~~1/20
Format	Liquid

Protein Information

Name	GTF2B
Synonyms	TF2B, TFIIB
Function	<p>General transcription factor that plays a role in transcription initiation by RNA polymerase II (Pol II). Involved in the pre-initiation complex (PIC) formation and Pol II recruitment at promoter DNA (PubMed:12931194, PubMed:1517211, PubMed:1876184, PubMed:1946368, PubMed:27193682, PubMed:3029109, PubMed:3818643, PubMed:7601352, PubMed:8413225, PubMed:8515820, PubMed:8516311, PubMed:8516312, PubMed:9420329). Together with the TATA box-bound TBP forms the core initiation complex and provides a bridge between TBP and the Pol II-TFIIF complex (PubMed:8413225, PubMed:8504927, PubMed:8515820, PubMed:8516311, PubMed:8516312). Released from the PIC early following the onset of transcription during the initiation and elongation transition and reassociates with TBP during the next transcription cycle (PubMed:7601352). Associates with chromatin to core promoter-specific regions (PubMed:12931194, PubMed:24441171). Binds to two distinct DNA core promoter consensus sequence elements in a TBP- independent manner; these IIB-recognition elements (BREs) are localized immediately upstream (BREu), 5'-[GC][GC][GA]CGCC-3', and downstream (BREd), 5'-[GA]T[TGA][TG][GT][TG][TG]-3', of the TATA box element (PubMed:10619841, PubMed:16230532, PubMed:7675079, PubMed:9420329). Modulates transcription start site selection (PubMed:10318856). Also exhibits</p>

autoacetyltransferase activity that contributes to the activated transcription (PubMed:[12931194](#)).

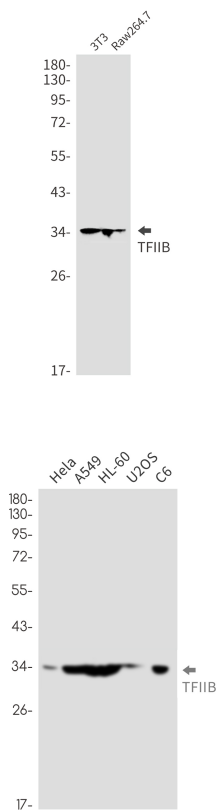
Cellular Location

Nucleus. Chromosome. Note=Non-acetylated form colocalizes with DNA in the G0/1, S and G2 phases of the cell cycle, but not during mitosis (PubMed:24441171). Acetylated form colocalizes at transcriptionally silent mitotic chromatids during mitosis at metaphase, anaphase, and telophase phases of the cell cycle (PubMed:24441171).

Tissue Location

Expressed in the inner cell mass forming the embryoblast (PubMed:24441171). Not detected in cells from the outer thin layer trophoblast (at protein level) (PubMed:24441171)

Images



Please note: All products are 'FOR RESEARCH USE ONLY. NOT FOR USE IN DIAGNOSTIC OR THERAPEUTIC PROCEDURES'.