

TPX2 Rabbit mAb

Catalog # AP76745

Product Information

Application	WB, ICC
Primary Accession	Q9ULW0
Reactivity	Human
Host	Rabbit
Clonality	Monoclonal Antibody
Calculated MW	85653

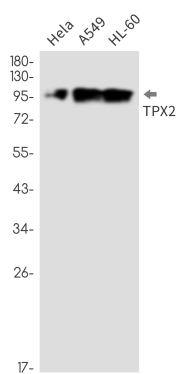
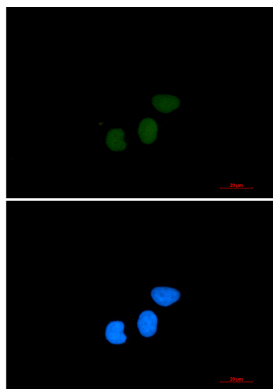
Additional Information

Gene ID	22974
Other Names	TPX2
Dilution	WB~~1/500-1/1000 ICC~~N/A
Format	Liquid

Protein Information

Name	TPX2
Synonyms	C20orf1, C20orf2, DIL2, HCA519
Function	<p>Spindle assembly factor required for normal assembly of mitotic spindles. Required for normal assembly of microtubules during apoptosis. Required for chromatin and/or kinetochore dependent microtubule nucleation. Mediates AURKA localization to spindle microtubules (PubMed:18663142, PubMed:19208764, PubMed:37728657). Activates AURKA by promoting its autophosphorylation at 'Thr-288' and protects this residue against dephosphorylation (PubMed:18663142, PubMed:19208764). TPX2 is inactivated upon binding to importin-alpha (PubMed:26165940). At the onset of mitosis, GOLGA2 interacts with importin-alpha, liberating TPX2 from importin-alpha, allowing TPX2 to activate AURKA kinase and stimulate local microtubule nucleation (PubMed:26165940).</p>
Cellular Location	<p>Nucleus. Cytoplasm, cytoskeleton, spindle. Cytoplasm, cytoskeleton, spindle pole. Note=During mitosis it is strictly associated with the spindle pole and with the mitotic spindle, whereas during S and G2, it is diffusely distributed throughout the nucleus. Is released from the nucleus in apoptotic cells and is detected on apoptotic microtubules.</p>
Tissue Location	Expressed in lung carcinoma cell lines but not in normal lung tissues

Images



Please note: All products are 'FOR RESEARCH USE ONLY. NOT FOR USE IN DIAGNOSTIC OR THERAPEUTIC PROCEDURES'.