

# TPX2 Rabbit mAb

Catalog # AP76746

## Product Information

---

Application	WB, IHC-P, IHC-F, IP, ICC
Primary Accession	<a href="#">Q9ULW0</a>
Reactivity	Human
Host	Rabbit
Clonality	Monoclonal Antibody
Calculated MW	85653

## Additional Information

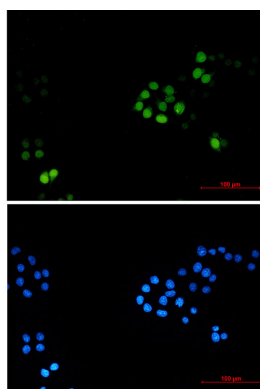
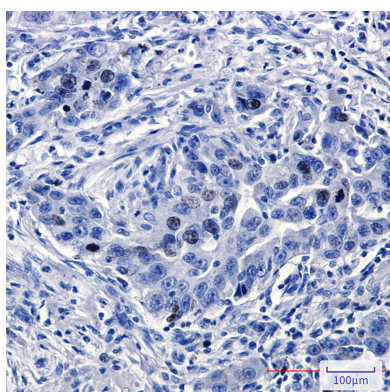
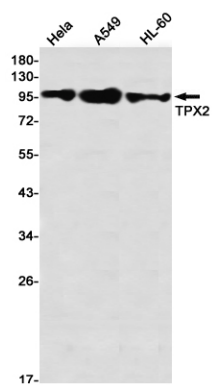
---

Gene ID	22974
Other Names	TPX2
Dilution	WB~~1/500-1/1000 IHC-P~~N/A IHC-F~~N/A IP~~N/A ICC~~N/A
Format	Liquid

## Protein Information

---

Name	TPX2
Synonyms	C20orf1, C20orf2, DIL2, HCA519
Function	Spindle assembly factor required for normal assembly of mitotic spindles. Required for normal assembly of microtubules during apoptosis. Required for chromatin and/or kinetochore dependent microtubule nucleation. Mediates AURKA localization to spindle microtubules (PubMed: <a href="#">18663142</a> , PubMed: <a href="#">19208764</a> , PubMed: <a href="#">37728657</a> ). Activates AURKA by promoting its autophosphorylation at 'Thr-288' and protects this residue against dephosphorylation (PubMed: <a href="#">18663142</a> , PubMed: <a href="#">19208764</a> ). TPX2 is inactivated upon binding to importin-alpha (PubMed: <a href="#">26165940</a> ). At the onset of mitosis, GOLGA2 interacts with importin-alpha, liberating TPX2 from importin-alpha, allowing TPX2 to activate AURKA kinase and stimulate local microtubule nucleation (PubMed: <a href="#">26165940</a> ).
Cellular Location	Nucleus. Cytoplasm, cytoskeleton, spindle. Cytoplasm, cytoskeleton, spindle pole. Note=During mitosis it is strictly associated with the spindle pole and with the mitotic spindle, whereas during S and G2, it is diffusely distributed throughout the nucleus. Is released from the nucleus in apoptotic cells and is detected on apoptotic microtubules.
Tissue Location	Expressed in lung carcinoma cell lines but not in normal lung tissues



Please note: All products are 'FOR RESEARCH USE ONLY. NOT FOR USE IN DIAGNOSTIC OR THERAPEUTIC PROCEDURES'.