

TRAPPC2 Rabbit mAb

Catalog # AP76747

Product Information

Application	WB
Primary Accession	P0DI81
Reactivity	Human
Host	Rabbit
Clonality	Monoclonal Antibody
Calculated MW	16445

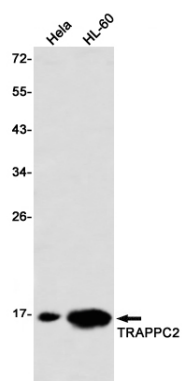
Additional Information

Gene ID	6399
Other Names	TRAPPC2
Dilution	WB~~1/500-1/1000
Format	50mM Tris-Glycine(pH 7.4), 0.15M NaCl, 40%Glycerol, 0.01% sodium azide and 0.05% BSA.

Protein Information

Name	TRAPPC2
Synonyms	SEDL
Function	Prevents transcriptional repression and induction of cell death by ENO1 (By similarity). May play a role in vesicular transport from endoplasmic reticulum to Golgi.
Cellular Location	Cytoplasm, perinuclear region. Endoplasmic reticulum-Golgi intermediate compartment. Nucleus. Cytoplasm. Note=Localized in perinuclear granular structures.
Tissue Location	Expressed in brain, heart, kidney, liver, lung, pancreas, placenta, skeletal muscle, fetal cartilage, fibroblasts, placenta and lymphocytes.

Images



Please note: All products are 'FOR RESEARCH USE ONLY. NOT FOR USE IN DIAGNOSTIC OR THERAPEUTIC PROCEDURES'.