

# Ubiquitin Conjugating Enzyme E2 C Rabbit mAb

Catalog # AP76754

## Product Information

---

<b>Application</b>	WB, IHC-P, IHC-F, IP, ICC
<b>Primary Accession</b>	<a href="#">O00762</a>
<b>Reactivity</b>	Human, Mouse, Rat
<b>Host</b>	Rabbit
<b>Clonality</b>	Monoclonal Antibody
<b>Calculated MW</b>	19652

## Additional Information

---

<b>Gene ID</b>	11065
<b>Other Names</b>	UBE2C
<b>Dilution</b>	WB~~1/500-1/1000 IHC-P~~N/A IHC-F~~N/A IP~~1/20 ICC~~N/A
<b>Format</b>	Liquid

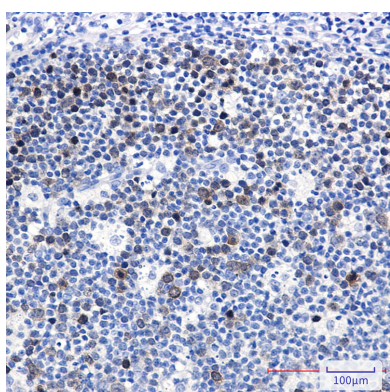
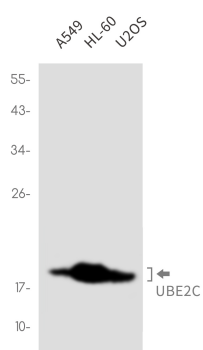
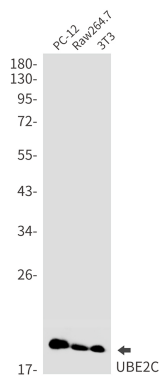
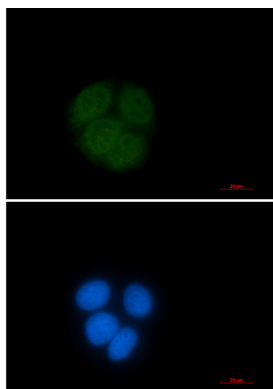
## Protein Information

---

<b>Name</b>	UBE2C
<b>Synonyms</b>	UBCH10
<b>Function</b>	Accepts ubiquitin from the E1 complex and catalyzes its covalent attachment to other proteins. In vitro catalyzes 'Lys-11'- and 'Lys-48'-linked polyubiquitination. Acts as an essential factor of the anaphase promoting complex/cyclosome (APC/C), a cell cycle-regulated ubiquitin ligase that controls progression through mitosis. Acts by initiating 'Lys-11'-linked polyubiquitin chains on APC/C substrates, leading to the degradation of APC/C substrates by the proteasome and promoting mitotic exit.

## Images

---



Please note: All products are 'FOR RESEARCH USE ONLY. NOT FOR USE IN DIAGNOSTIC OR THERAPEUTIC PROCEDURES'.