

WWOX Rabbit mAb

Catalog # AP76765

Product Information

Application	WB, IHC-P, IP
Primary Accession	Q9NZC7
Reactivity	Human, Mouse
Host	Rabbit
Clonality	Monoclonal Antibody
Calculated MW	46677

Additional Information

Gene ID	51741
Other Names	WWOX
Dilution	WB~~1/500-1/1000 IHC-P~~N/A IP~~1/20
Format	50mM Tris-Glycine(pH 7.4), 0.15M NaCl, 40%Glycerol, 0.01% sodium azide and 0.05% BSA.
Storage	Store at 4°C short term. Aliquot and store at -20°C long term. Avoid freeze/thaw cycles.

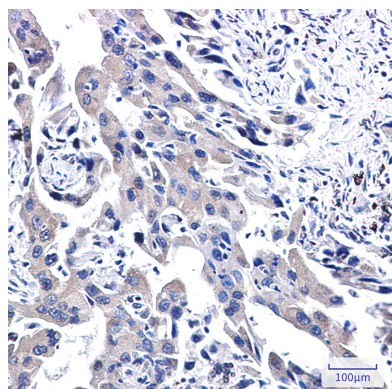
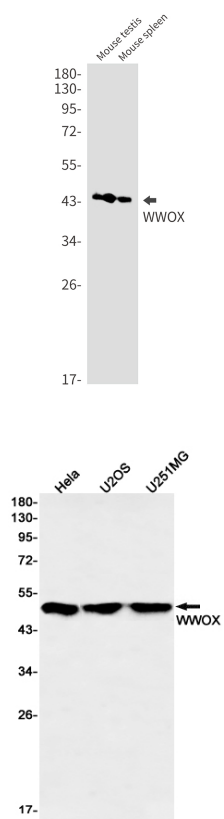
Protein Information

Name	WWOX
Synonyms	FOR, SDR41C1, WOX1
Function	Putative oxidoreductase. Acts as a tumor suppressor and plays a role in apoptosis. Required for normal bone development (By similarity). May function synergistically with p53/TP53 to control genotoxic stress-induced cell death. Plays a role in TGFB1 signaling and TGFB1-mediated cell death. May also play a role in tumor necrosis factor (TNF)-mediated cell death. Inhibits Wnt signaling, probably by sequestering DVL2 in the cytoplasm.
Cellular Location	Cytoplasm. Nucleus Mitochondrion. Golgi apparatus. Lysosome Note=Partially localizes to the mitochondria (PubMed:14695174) Translocates to the nucleus upon genotoxic stress or TNF stimulation (By similarity). Translocates to the nucleus in response to TGFB1 (PubMed:19366691). Isoform 5 and isoform 6 may localize in the nucleus Localized to the lysosome probably upon binding to VOPP1 (PubMed:30285739). {ECO:0000250, ECO:0000269 PubMed:14695174, ECO:0000269 PubMed:19366691, ECO:0000269 PubMed:30285739}

Tissue Location

Widely expressed. Strongly expressed in testis, prostate, and ovary.
Overexpressed in cancer cell lines. Isoform 5 and isoform 6 may only be expressed in tumor cell lines

Images



Please note: All products are 'FOR RESEARCH USE ONLY. NOT FOR USE IN DIAGNOSTIC OR THERAPEUTIC PROCEDURES'.