

XRCC1 Rabbit mAb

Catalog # AP76766

Product Information

Application	WB, ICC
Primary Accession	P18887
Reactivity	Human, Rat
Host	Rabbit
Clonality	Monoclonal Antibody
Calculated MW	69498

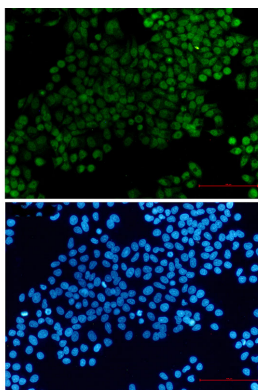
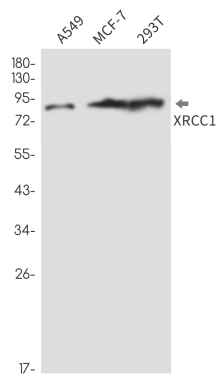
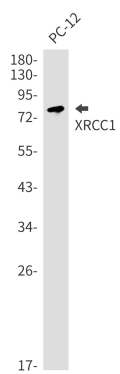
Additional Information

Gene ID	7515
Other Names	XRCC1
Dilution	WB~~1/500-1/1000 ICC~~N/A
Format	50mM Tris-Glycine(pH 7.4), 0.15M NaCl, 40%Glycerol, 0.01% sodium azide and 0.05% BSA.

Protein Information

Name	XRCC1 {ECO:0000303 PubMed:2247054, ECO:0000312 HGNC:HGNC:12828}
Function	Scaffold protein involved in DNA single-strand break repair by mediating the assembly of DNA break repair protein complexes (PubMed: 11163244 , PubMed: 28002403). Negatively regulates ADP- ribosyltransferase activity of PARP1 during base-excision repair in order to prevent excessive PARP1 activity (PubMed: 28002403 , PubMed: 34102106 , PubMed: 34811483). Recognizes and binds poly-ADP-ribose chains: specifically binds auto-poly-ADP-ribosylated PARP1, limiting its activity (PubMed: 14500814 , PubMed: 34102106 , PubMed: 34811483).
Cellular Location	Nucleus. Chromosome Note=Moves from the nucleoli to the global nuclear chromatin upon DNA damage (PubMed:28002403). Recruited to DNA damage sites following interaction with poly-ADP-ribose chains (PubMed:14500814)
Tissue Location	Expressed in fibroblasts, retinal pigmented epithelial cells and lymphoblastoid cells (at protein level)

Images



Please note: All products are 'FOR RESEARCH USE ONLY. NOT FOR USE IN DIAGNOSTIC OR THERAPEUTIC PROCEDURES'.