

Phospholipase A2 Activator Protein Rabbit mAb

Catalog # AP76802

Product Information

Application	WB, ICC
Primary Accession	Q9Y263
Reactivity	Human, Mouse
Host	Rabbit
Clonality	Monoclonal Antibody
Calculated MW	87157

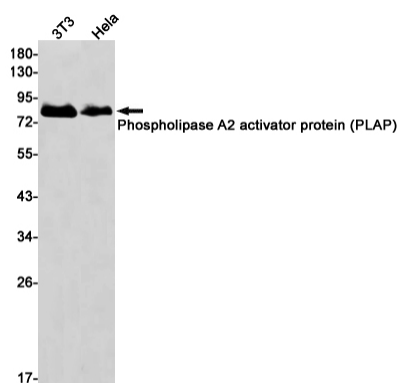
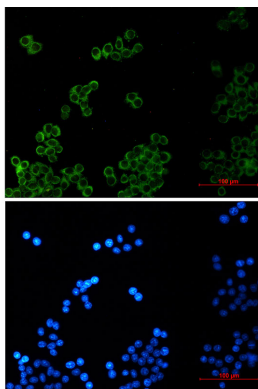
Additional Information

Gene ID	9373
Other Names	PLAA
Dilution	WB~~1/500-1/1000 ICC~~N/A
Format	50mM Tris-Glycine(pH 7.4), 0.15M NaCl, 40%Glycerol, 0.01% sodium azide and 0.05% BSA.
Storage	Store at 4°C short term. Aliquot and store at -20°C long term. Avoid freeze/thaw cycles.

Protein Information

Name	PLAA
Synonyms	PLAP
Function	Plays a role in protein ubiquitination, sorting and degradation through its association with VCP (PubMed: 27753622). Involved in ubiquitin-mediated membrane proteins trafficking to late endosomes in an ESCRT-dependent manner, and hence plays a role in synaptic vesicle recycling (By similarity). May play a role in macroautophagy, regulating for instance the clearance of damaged lysosomes (PubMed: 27753622). Plays a role in cerebellar Purkinje cell development (By similarity). Positively regulates cytosolic and calcium-independent phospholipase A2 activities in a tumor necrosis factor alpha (TNF-alpha)- or lipopolysaccharide (LPS)-dependent manner, and hence prostaglandin E2 biosynthesis (PubMed: 18291623 , PubMed: 28007986).
Cellular Location	Nucleus. Cytoplasm. Synapse {ECO:0000250 UniProtKB:P27612}. Note=Recruited to damaged lysosomes decorated with K48-linked ubiquitin chains

Images



Please note: All products are 'FOR RESEARCH USE ONLY. NOT FOR USE IN DIAGNOSTIC OR THERAPEUTIC PROCEDURES'.