

SRSF3 Rabbit mAb

Catalog # AP76811

Product Information

Application	WB, IHC-P
Primary Accession	P84103
Reactivity	Human, Mouse, Rat
Host	Rabbit
Clonality	Monoclonal Antibody
Calculated MW	19330

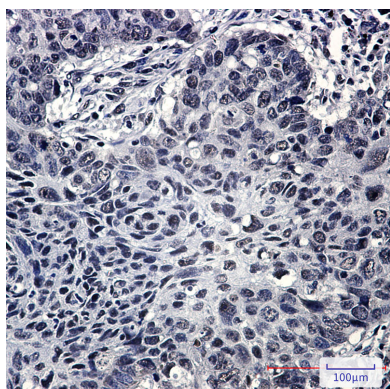
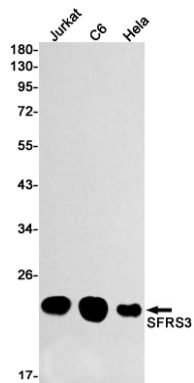
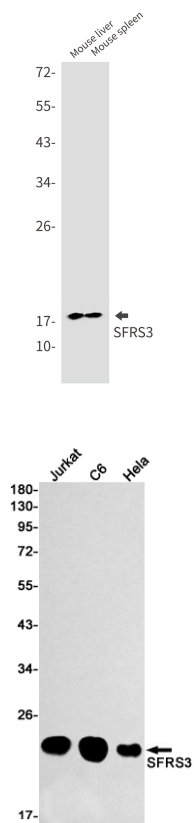
Additional Information

Gene ID	6428
Other Names	SRSF3
Dilution	WB~~1/500-1/1000 IHC-P~~N/A
Format	Liquid

Protein Information

Name	SRSF3
Synonyms	SFRS3, SRP20
Function	<p>Splicing factor, which binds the consensus motif 5'-C[ACU][AU]C[ACU][AC]C-3' within pre-mRNA and promotes specific exons inclusion during alternative splicing (PubMed:17036044, PubMed:26876937, PubMed:32440474). Interaction with YTHDC1, a RNA- binding protein that recognizes and binds N6-methyladenosine (m6A)- containing RNAs, promotes recruitment of SRSF3 to its mRNA-binding elements adjacent to m6A sites within exons (PubMed:26876937). Also functions as an adapter involved in mRNA nuclear export (PubMed:11336712, PubMed:18364396, PubMed:28984244). Binds mRNA which is thought to be transferred to the NXF1-NXT1 heterodimer for export (TAP/NXF1 pathway); enhances NXF1-NXT1 RNA-binding activity (PubMed:11336712, PubMed:18364396). Involved in nuclear export of m6A- containing mRNAs via interaction with YTHDC1: interaction with YTHDC1 facilitates m6A-containing mRNA-binding to both SRSF3 and NXF1, promoting mRNA nuclear export (PubMed:28984244).</p>
Cellular Location	Nucleus. Nucleus speckle. Cytoplasm. Note=Recruited to nuclear speckles following interaction with YTHDC1.

Images



Please note: All products are 'FOR RESEARCH USE ONLY. NOT FOR USE IN DIAGNOSTIC OR THERAPEUTIC PROCEDURES'.