

# EGFR Rabbit mAb

Catalog # AP76823

## Product Information

---

Application	WB, IP, ICC
Primary Accession	<a href="#">P00533</a>
Reactivity	Human, Mouse
Host	Rabbit
Clonality	Monoclonal Antibody
Calculated MW	134277

## Additional Information

---

Gene ID	1956
Other Names	EGFR
Dilution	WB~~1/500-1/1000 IP~~1/20 ICC~~N/A
Format	50mM Tris-Glycine(pH 7.4), 0.15M NaCl, 40%Glycerol, 0.01% sodium azide and 0.05% BSA.
Storage	Store at 4°C short term. Aliquot and store at -20°C long term. Avoid freeze/thaw cycles.

## Protein Information

---

Name	EGFR ( <a href="#">HGNC:3236</a> )
Synonyms	ERBB, ERBB1, HER1
Function	<p>Receptor tyrosine kinase binding ligands of the EGF family and activating several signaling cascades to convert extracellular cues into appropriate cellular responses (PubMed:<a href="#">10805725</a>, PubMed:<a href="#">27153536</a>, PubMed:<a href="#">2790960</a>, PubMed:<a href="#">35538033</a>). Known ligands include EGF, TGFA/TGF- alpha, AREG, epigen/EPGN, BTC/betacellulin, epiregulin/EREG and HBEGF/heparin-binding EGF (PubMed:<a href="#">12297049</a>, PubMed:<a href="#">15611079</a>, PubMed:<a href="#">17909029</a>, PubMed:<a href="#">20837704</a>, PubMed:<a href="#">27153536</a>, PubMed:<a href="#">2790960</a>, PubMed:<a href="#">7679104</a>, PubMed:<a href="#">8144591</a>, PubMed:<a href="#">9419975</a>). Ligand binding triggers receptor homo- and/or heterodimerization and autophosphorylation on key cytoplasmic residues. The phosphorylated receptor recruits adapter proteins like GRB2 which in turn activates complex downstream signaling cascades. Activates at least 4 major downstream signaling cascades including the RAS-RAF-MEK-ERK, PI3 kinase-AKT, PLCgamma-PKC and STATs modules (PubMed:<a href="#">27153536</a>). May also activate the NF-kappa-B signaling cascade (PubMed:<a href="#">11116146</a>). Also directly phosphorylates other proteins like RGS16, activating its GTPase activity and probably coupling the EGF receptor signaling to the G</p>

protein-coupled receptor signaling (PubMed:[11602604](#)). Also phosphorylates MUC1 and increases its interaction with SRC and CTNNB1/beta-catenin (PubMed:[11483589](#)). Positively regulates cell migration via interaction with CCDC88A/GIV which retains EGFR at the cell membrane following ligand stimulation, promoting EGFR signaling which triggers cell migration (PubMed:[20462955](#)). Plays a role in enhancing learning and memory performance (By similarity). Plays a role in mammalian pain signaling (long-lasting hypersensitivity) (By similarity).

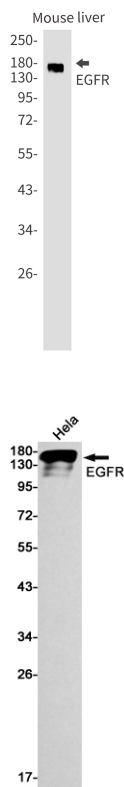
## Cellular Location

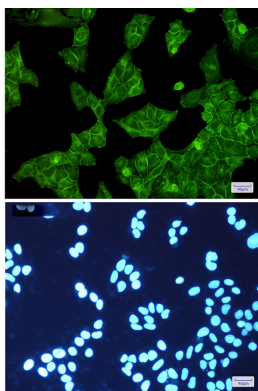
Cell membrane; Single-pass type I membrane protein. Endoplasmic reticulum membrane; Single-pass type I membrane protein. Golgi apparatus membrane; Single-pass type I membrane protein. Nucleus membrane; Single-pass type I membrane protein Endosome Endosome membrane. Nucleus. Note=In response to EGF, translocated from the cell membrane to the nucleus via Golgi and ER (PubMed:17909029, PubMed:20674546). Endocytosed upon activation by ligand (PubMed:17182860, PubMed:17909029, PubMed:27153536, PubMed:2790960). Colocalized with GPER1 in the nucleus of estrogen agonist-induced cancer-associated fibroblasts (CAF) (PubMed:20551055)

## Tissue Location

Ubiquitously expressed. Isoform 2 is also expressed in ovarian cancers.

## Images





Please note: All products are 'FOR RESEARCH USE ONLY. NOT FOR USE IN DIAGNOSTIC OR THERAPEUTIC PROCEDURES'.