

# Bcl2 Rabbit mAb

Catalog # AP76834

## Product Information

---

Application	WB, IHC-P
Primary Accession	<a href="#">P10415</a>
Reactivity	Human, Mouse
Host	Rabbit
Clonality	Monoclonal Antibody
Calculated MW	26266

## Additional Information

---

Gene ID	596
Other Names	BCL2
Dilution	WB~~1/500-1/1000 IHC-P~~N/A
Format	50mM Tris-Glycine(pH 7.4), 0.15M NaCl, 40%Glycerol, 0.01% sodium azide and 0.05% BSA.
Storage	Store at 4°C short term. Aliquot and store at -20°C long term. Avoid freeze/thaw cycles.

## Protein Information

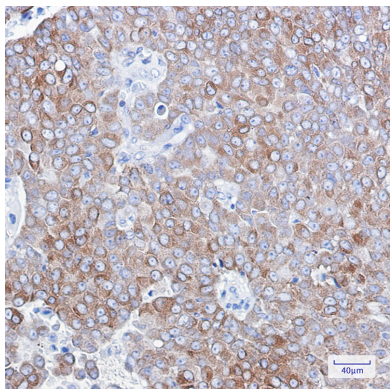
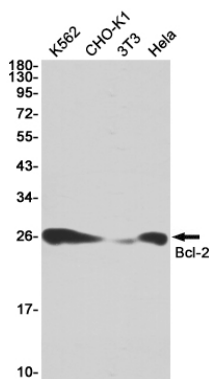
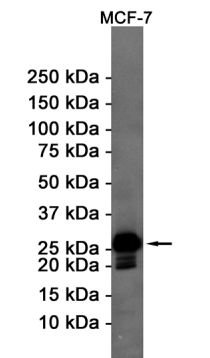
---

Name	BCL2
Function	Suppresses apoptosis in a variety of cell systems including factor-dependent lymphohematopoietic and neural cells (PubMed: <a href="#">1508712</a> , PubMed: <a href="#">8183370</a> ). Regulates cell death by controlling the mitochondrial membrane permeability (PubMed: <a href="#">11368354</a> ). Appears to function in a feedback loop system with caspases (PubMed: <a href="#">11368354</a> ). Inhibits caspase activity either by preventing the release of cytochrome c from the mitochondria and/or by binding to the apoptosis-activating factor (APAF-1) (PubMed: <a href="#">11368354</a> ). Also acts as an inhibitor of autophagy: interacts with BECN1 and AMBRA1 during non-starvation conditions and inhibits their autophagy function (PubMed: <a href="#">18570871</a> , PubMed: <a href="#">20889974</a> , PubMed: <a href="#">21358617</a> ). May attenuate inflammation by impairing NLRP1- inflammasome activation, hence CASP1 activation and IL1B release (PubMed: <a href="#">17418785</a> ).
Cellular Location	Mitochondrion outer membrane; Single-pass membrane protein. Nucleus membrane; Single-pass membrane protein. Endoplasmic reticulum membrane; Single-pass membrane protein. Cytoplasm {ECO:0000250 UniProtKB:P10417}

Tissue Location

Expressed in a variety of tissues.

Images



Please note: All products are 'FOR RESEARCH USE ONLY. NOT FOR USE IN DIAGNOSTIC OR THERAPEUTIC PROCEDURES'.