

# Citrate Synthetase Rabbit mAb

Catalog # AP76847

## Product Information

|                          |                        |
|--------------------------|------------------------|
| <b>Application</b>       | WB, IHC-P, IHC-F, ICC  |
| <b>Primary Accession</b> | <a href="#">O75390</a> |
| <b>Reactivity</b>        | Human, Mouse, Rat      |
| <b>Host</b>              | Rabbit                 |
| <b>Clonality</b>         | Monoclonal Antibody    |
| <b>Calculated MW</b>     | 51712                  |

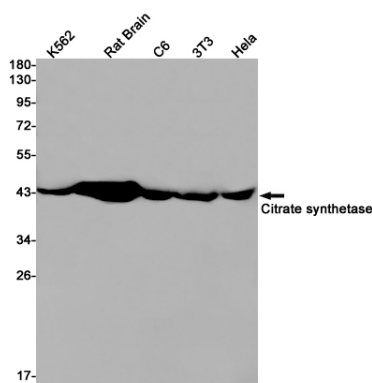
## Additional Information

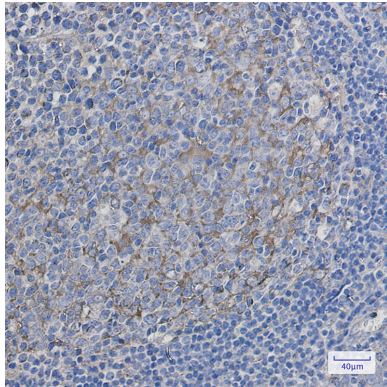
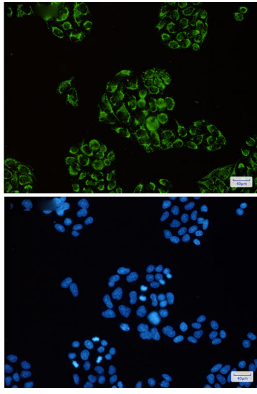
|                    |   |
|--------------------|---|
| <b>Gene ID</b>     | 1431  |
| <b>Other Names</b> | CS  |
| <b>Dilution</b>    | WB~~1/500-1/1000 IHC-P~~N/A IHC-F~~N/A ICC~~N/A |
| <b>Format</b>      | Liquid  |

## Protein Information

|                          |  |
|--------------------------|--|
| <b>Name</b>              | CS   |
| <b>Function</b>          | Key enzyme of the Krebs tricarboxylic acid cycle which catalyzes the synthesis of citrate from acetyl coenzyme A and oxaloacetate. |
| <b>Cellular Location</b> | Mitochondrion matrix {ECO:0000250   UniProtKB:P00889}  |

## Images





Please note: All products are 'FOR RESEARCH USE ONLY. NOT FOR USE IN DIAGNOSTIC OR THERAPEUTIC PROCEDURES'.