

GSDMD Rabbit mAb

Catalog # AP76856

Product Information

Application	WB
Primary Accession	P57764
Reactivity	Human
Host	Rabbit
Clonality	Monoclonal Antibody
Calculated MW	52801

Additional Information

Gene ID	79792
Other Names	GSDMD
Dilution	WB~~1/500-1/1000
Format	50mM Tris-Glycine(pH 7.4), 0.15M NaCl, 40%Glycerol, 0.01% sodium azide and 0.05% BSA.
Storage	Store at 4°C short term. Aliquot and store at -20°C long term. Avoid freeze/thaw cycles.

Protein Information

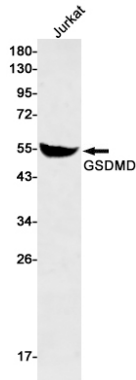
Name	GSDMD {ECO:0000303 PubMed:26375003, ECO:0000312 HGNC:HGNC:25697}
Function	[Gasdermin-D]: Precursor of a pore-forming protein that plays a key role in host defense against pathogen infection and danger signals (PubMed: 26375003 , PubMed: 26375259 , PubMed: 27281216). This form constitutes the precursor of the pore-forming protein: upon cleavage, the released N-terminal moiety (Gasdermin-D, N-terminal) binds to membranes and forms pores, triggering pyroptosis (PubMed: 26375003 , PubMed: 26375259 , PubMed: 27281216).
Cellular Location	[Gasdermin-D]: Cytoplasm, cytosol. Inflammasome {ECO:0000250 UniProtKB:Q9D8T2}. Note=In response to a canonical inflammasome stimulus, such as nigericin, recruited to NLRP3 inflammasome with similar kinetics to that of uncleaved CASP1 precursor. {ECO:0000250 UniProtKB:Q9D8T2} [Gasdermin-D, N-terminal]: Cytoplasm, cytosol. Note=(Microbial infection) Upon infection by M.tuberculosis, localization to cell membrane is prevented by M.tuberculosis phosphatase PtpB that catalyzes dephosphorylation of phosphatidylinositol (4,5)-bisphosphate and phosphatidylinositol 4- phosphate, thereby inhibiting

the membrane targeting of Gasdermin-D, N- terminal and subsequent cytokine release and pyroptosis [Gasdermin-D, C-terminal]: Cytoplasm, cytosol {ECO:0000250|UniProtKB:Q9D8T2}

Tissue Location

Expressed in the suprabasal cells of esophagus, as well as in the isthmus/neck, pit, and gland of the stomach, suggesting preferential expression in differentiating cells

Images



Please note: All products are 'FOR RESEARCH USE ONLY. NOT FOR USE IN DIAGNOSTIC OR THERAPEUTIC PROCEDURES'.