

Paxillin Rabbit mAb

Catalog # AP76872

Product Information

Application	WB, IHC-P, IHC-F, IP, ICC
Primary Accession	P49023
Reactivity	Human, Mouse, Rat
Host	Rabbit
Clonality	Monoclonal Antibody
Calculated MW	64505

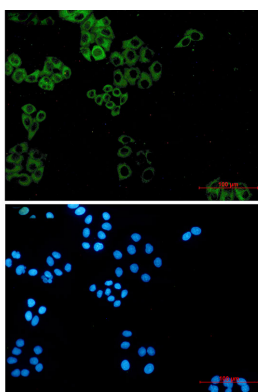
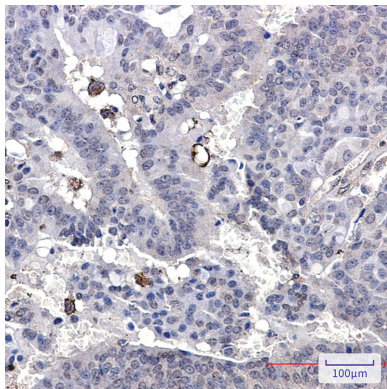
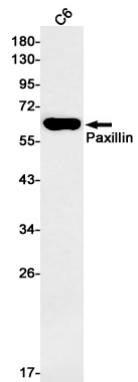
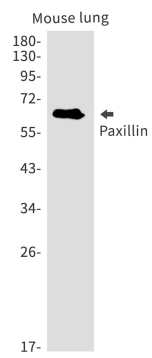
Additional Information

Gene ID	5829
Other Names	PXN
Dilution	WB~~1/500-1/1000 IHC-P~~N/A IHC-F~~N/A IP~~1/20 ICC~~N/A
Format	50mM Tris-Glycine(pH 7.4), 0.15M NaCl, 40%Glycerol, 0.01% sodium azide and 0.05% BSA.
Storage	Store at 4°C short term. Aliquot and store at -20°C long term. Avoid freeze/thaw cycles.

Protein Information

Name	PXN (HGNC:9718)
Function	Cytoskeletal protein involved in actin-membrane attachment at sites of cell adhesion to the extracellular matrix (focal adhesion). Recruits other proteins such as TRIM15 to focal adhesion.
Cellular Location	Cytoplasm, cytoskeleton. Cell junction, focal adhesion. Cytoplasm, cell cortex {ECO:0000250 UniProtKB:Q8VI36}. Note=Colocalizes with integrins at the cell periphery. Colocalize with PXN to membrane ruffles and the leading edge of migrating cells (PubMed:23128389). {ECO:0000250, ECO:0000269 PubMed:23128389}

Images



Please note: All products are 'FOR RESEARCH USE ONLY. NOT FOR USE IN DIAGNOSTIC OR THERAPEUTIC PROCEDURES'.