

# TOMM20 Rabbit mAb

Catalog # AP76884

## Product Information

---

<b>Application</b>	WB, IHC-P, IHC-F, ICC
<b>Primary Accession</b>	<a href="#">Q15388</a>
<b>Reactivity</b>	Human, Hamster
<b>Host</b>	Rabbit
<b>Clonality</b>	Monoclonal Antibody
<b>Calculated MW</b>	16298

## Additional Information

---

<b>Gene ID</b>	9804
<b>Other Names</b>	TOMM20
<b>Dilution</b>	WB~~1/500-1/1000 IHC-P~~N/A IHC-F~~N/A ICC~~N/A
<b>Format</b>	Liquid

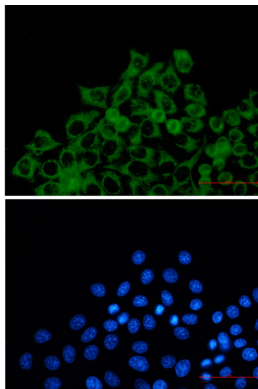
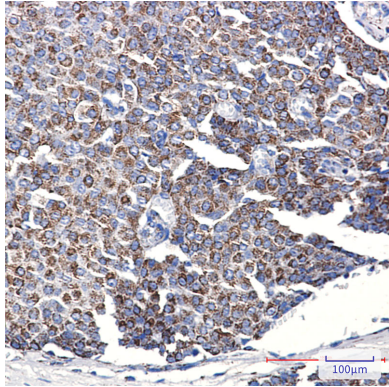
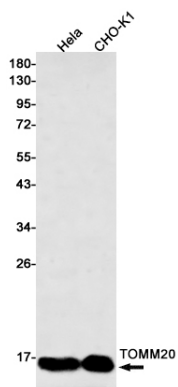
## Protein Information

---

<b>Name</b>	TOMM20
<b>Synonyms</b>	KIAA0016
<b>Function</b>	Central component of the receptor complex responsible for the recognition and translocation of cytosolically synthesized mitochondrial preproteins. Together with TOM22 functions as the transit peptide receptor at the surface of the mitochondrion outer membrane and facilitates the movement of preproteins into the TOM40 translocation pore (By similarity). Required for the translocation across the mitochondrial outer membrane of cytochrome P450 monooxygenases.
<b>Cellular Location</b>	Mitochondrion outer membrane; Single-pass membrane protein

## Images

---



Please note: All products are 'FOR RESEARCH USE ONLY. NOT FOR USE IN DIAGNOSTIC OR THERAPEUTIC PROCEDURES'.