

Flotillin 2 Rabbit mAb

Catalog # AP76907

Product Information

Application	WB, IP
Primary Accession	Q14254
Reactivity	Rat, Human, Mouse
Host	Rabbit
Clonality	Monoclonal Antibody
Isotype	IgG
Conjugate	Unconjugated
Immunogen	A synthesized peptide derived from human Flotillin 2
Purification	Affinity Chromatography
Calculated MW	47064

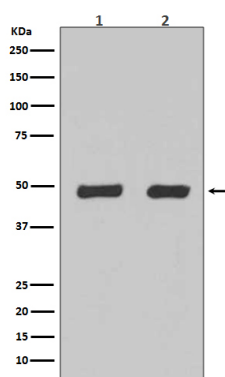
Additional Information

Gene ID	2319
Other Names	FLOT2
Dilution	WB~~1/500-1/1000 IP~~N/A
Format	Liquid in 10mM PBS, pH 7.4, 150mM sodium chloride, 0.05% BSA, 0.02% sodium azide and 50% glycerol.
Storage	Store at 4°C short term. Aliquot and store at -20°C long term. Avoid freeze/thaw cycles.

Protein Information

Name	FLOT2
Synonyms	ESA1, M17S1
Function	May act as a scaffolding protein within caveolar membranes, functionally participating in formation of caveolae or caveolae-like vesicles. May be involved in epidermal cell adhesion and epidermal structure and function.
Cellular Location	Cell membrane; Peripheral membrane protein. Membrane, caveola; Peripheral membrane protein. Endosome Membrane; Lipid-anchor. Note=Membrane- associated protein of caveolae
Tissue Location	In skin, expressed in epidermis and epidermal appendages but not in dermis. Expressed in all layers of the epidermis except the basal layer. In hair follicles, expressed in the suprabasal layer but not the basal layer. Also expressed in melanoma and carcinoma cell lines, fibroblasts and foreskin melanocytes

Images



Please note: All products are 'FOR RESEARCH USE ONLY. NOT FOR USE IN DIAGNOSTIC OR THERAPEUTIC PROCEDURES'.