

Prostate Specific Antigen Rabbit mAb

Catalog # AP76946

Product Information

Application	WB, IHC-P
Primary Accession	P07288
Reactivity	Human
Host	Rabbit
Clonality	Monoclonal Antibody
Isotype	IgG
Conjugate	Unconjugated
Immunogen	A synthesized peptide derived from human PSA/KLK3
Purification	Affinity Chromatography
Calculated MW	28741

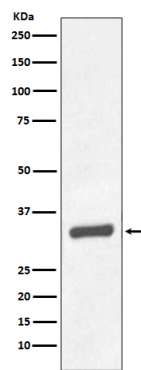
Additional Information

Gene ID	354
Other Names	KLK3
Dilution	WB~~1/500-1/1000 IHC-P~~N/A
Format	Liquid in 10mM PBS, pH 7.4, 150mM sodium chloride, 0.05% BSA, 0.02% sodium azide and 50% glycerol.
Storage	Store at 4°C short term. Aliquot and store at -20°C long term. Avoid freeze/thaw cycles.

Protein Information

Name	KLK3
Synonyms	APS
Function	Hydrolyzes semenogelin-1 thus leading to the liquefaction of the seminal coagulum.
Cellular Location	Secreted.

Images



Please note: All products are 'FOR RESEARCH USE ONLY. NOT FOR USE IN DIAGNOSTIC OR THERAPEUTIC PROCEDURES'.