

MRP2 Rabbit mAb

Catalog # AP76963

Product Information

Application	WB, IF, FC, ICC
Primary Accession	Q92887
Reactivity	Human
Host	Rabbit
Clonality	Monoclonal Antibody
Isotype	IgG
Conjugate	Unconjugated
Immunogen	A synthesized peptide derived from human MRP2
Purification	Affinity Chromatography
Calculated MW	174207

Additional Information

Gene ID	1244
Other Names	ABCC2
Dilution	WB~~1/500-1/1000 IF~~1:50~200 FC~~1:10~50 ICC~~N/A
Format	Liquid in 10mM PBS, pH 7.4, 150mM sodium chloride, 0.05% BSA, 0.02% sodium azide and 50% glycerol.
Storage	Store at 4°C short term. Aliquot and store at -20°C long term. Avoid freeze/thaw cycles.

Protein Information

Name	ABCC2 (HGNC:53)
Function	ATP-dependent transporter of the ATP-binding cassette (ABC) family that binds and hydrolyzes ATP to enable active transport of various substrates including many drugs, toxicants and endogenous compound across cell membranes. Transports a wide variety of conjugated organic anions such as sulfate-, glucuronide- and glutathione (GSH)- conjugates of endo- and xenobiotics substrates (PubMed: 10220572 , PubMed: 10421658 , PubMed: 11500505 , PubMed: 16332456). Mediates hepatobiliary excretion of mono- and bis-glucuronidated bilirubin molecules and therefore play an important role in bilirubin detoxification (PubMed: 10421658). Also mediates hepatobiliary excretion of others glucuronide conjugates such as 17beta-estradiol 17- glucosiduronic acid and leukotriene C4 (PubMed: 11500505). Transports sulfated bile salt such as tauroolithocholate sulfate (PubMed: 16332456). Transports various anticancer drugs, such as anthracycline, vinca alkaloid and methotrexate and HIV-drugs such as

protease inhibitors (PubMed:[10220572](#), PubMed:[11500505](#), PubMed:[12441801](#)). Confers resistance to several anti-cancer drugs including cisplatin, doxorubicin, epirubicin, methotrexate, etoposide and vincristine (PubMed:[10220572](#), PubMed:[11500505](#)).

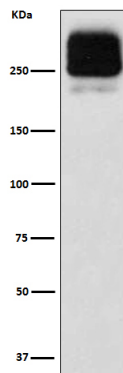
Cellular Location

Apical cell membrane; Multi-pass membrane protein. Note=Localized to the apical membrane of enterocytes

Tissue Location

Expressed by polarized cells in liver, kidney and intestine. The highest expression is found in liver. Expressed in small intestine (PubMed:28408210).

Images



Please note: All products are 'FOR RESEARCH USE ONLY. NOT FOR USE IN DIAGNOSTIC OR THERAPEUTIC PROCEDURES'.