

Lipoprotein Lipase Rabbit mAb

Catalog # AP76964

Product Information

Application	WB, IHC-P
Primary Accession	P06858
Reactivity	Human
Host	Rabbit
Clonality	Monoclonal Antibody
Isotype	IgG
Conjugate	Unconjugated
Immunogen	A synthesized peptide derived from human Lipoprotein lipase
Purification	Affinity Chromatography
Calculated MW	53162

Additional Information

Gene ID	4023
Other Names	LPL
Dilution	WB~~1/500-1/1000 IHC-P~~N/A
Format	Liquid in 10mM PBS, pH 7.4, 150mM sodium chloride, 0.05% BSA, 0.02% sodium azide and 50% glycerol.
Storage	Store at 4°C short term. Aliquot and store at -20°C long term. Avoid freeze/thaw cycles.

Protein Information

Name	LPL
Synonyms	LIPD
Function	Key enzyme in triglyceride metabolism. Catalyzes the hydrolysis of triglycerides from circulating chylomicrons and very low density lipoproteins (VLDL), and thereby plays an important role in lipid clearance from the blood stream, lipid utilization and storage (PubMed: 11342582 , PubMed: 27578112 , PubMed: 8675619). Although it has both phospholipase and triglyceride lipase activities it is primarily a triglyceride lipase with low but detectable phospholipase activity (PubMed: 12032167 , PubMed: 7592706). Mediates margination of triglyceride-rich lipoprotein particles in capillaries (PubMed: 24726386). Recruited to its site of action on the luminal surface of vascular endothelium by binding to GPIHBP1 and cell surface heparan sulfate proteoglycans (PubMed: 11342582 , PubMed: 27811232).

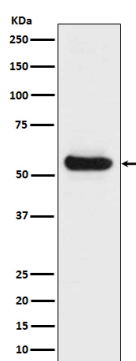
Cellular Location

Cell membrane {ECO:0000250|UniProtKB:P11151}; Peripheral membrane protein {ECO:0000250|UniProtKB:P11151}; Extracellular side {ECO:0000250|UniProtKB:P11151}. Secreted. Secreted, extracellular space, extracellular matrix. Note=Newly synthesized LPL binds to cell surface heparan proteoglycans and is then released by heparanase Subsequently, it becomes attached to heparan proteoglycan on endothelial cells (PubMed:27811232). Locates to the plasma membrane of microvilli of hepatocytes with triglyceride-rich lipoproteins (TRL) Some of the bound LPL is then internalized and located inside non- coated endocytic vesicles (By similarity) {ECO:0000250|UniProtKB:P11151, ECO:0000269|PubMed:27811232}

Tissue Location

Detected in blood plasma (PubMed:11893776, PubMed:12641539, PubMed:2340307). Detected in milk (at protein level) (PubMed:2340307).

Images



Please note: All products are 'FOR RESEARCH USE ONLY. NOT FOR USE IN DIAGNOSTIC OR THERAPEUTIC PROCEDURES'.