

Calpain 1 Rabbit mAb

Catalog # AP76967

Product Information

Application	WB, IHC-P, IF, FC, ICC
Primary Accession	P07384
Reactivity	Rat, Human, Mouse
Host	Rabbit
Clonality	Monoclonal Antibody
Isotype	IgG
Conjugate	Unconjugated
Immunogen	A synthesized peptide derived from human Calpain 1
Purification	Affinity Chromatography
Calculated MW	81890

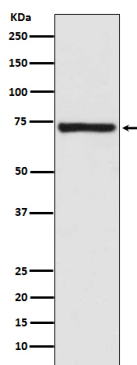
Additional Information

Gene ID	823
Other Names	CAPN1
Dilution	WB~~1/500-1/1000 IHC-P~~N/A IF~~1:50~200 FC~~1:10~50 ICC~~N/A
Format	Liquid in 10mM PBS, pH 7.4, 150mM sodium chloride, 0.05% BSA, 0.02% sodium azide and 50% glycerol.
Storage	Store at 4°C short term. Aliquot and store at -20°C long term. Avoid freeze/thaw cycles.

Protein Information

Name	CAPN1 (HGNC:1476)
Synonyms	CANPL1
Function	Calcium-regulated non-lysosomal thiol-protease which catalyzes limited proteolysis of substrates involved in cytoskeletal remodeling and signal transduction (PubMed: 19617626 , PubMed: 21531719 , PubMed: 2400579). Proteolytically cleaves CTBP1 at 'Asn-375', 'Gly-387' and 'His-409' (PubMed: 23707407). Cleaves and activates caspase-7 (CASP7) (PubMed: 19617626).
Cellular Location	Cytoplasm. Cell membrane. Note=Translocates to the plasma membrane upon Ca(2+) binding. In granular keratinocytes and in lower corneocytes, colocalizes with FLG and FLG2 (PubMed:21531719)
Tissue Location	Ubiquitous.

Images



Please note: All products are 'FOR RESEARCH USE ONLY. NOT FOR USE IN DIAGNOSTIC OR THERAPEUTIC PROCEDURES'.