

Syntaxin 1A Rabbit mAb

Catalog # AP77020

Product Information

Application	WB, FC, IP
Primary Accession	Q16623
Reactivity	Rat, Human, Mouse
Host	Rabbit
Clonality	Monoclonal Antibody
Isotype	IgG
Conjugate	Unconjugated
Immunogen	A synthesized peptide derived from human STX1A
Purification	Affinity Purified
Calculated MW	33023

Additional Information

Gene ID	6804
Other Names	STX1A
Dilution	WB~~1/500-1/1000 FC~~1:10~50 IP~~N/A
Format	Liquid in 10mM PBS, pH 7.4, 150mM sodium chloride, 0.05% BSA, 0.02% sodium azide and 50% glycerol.
Storage	Store at 4°C short term. Aliquot and store at -20°C long term. Avoid freeze/thaw cycles.

Protein Information

Name	STX1A
Synonyms	STX1
Function	Plays an essential role in hormone and neurotransmitter calcium-dependent exocytosis and endocytosis (PubMed: 26635000). Part of the SNARE (Soluble NSF Attachment Receptor) complex composed of SNAP25, STX1A and VAMP2 which mediates the fusion of synaptic vesicles with the presynaptic plasma membrane. STX1A and SNAP25 are localized on the plasma membrane while VAMP2 resides in synaptic vesicles. The pairing of the three SNAREs from the N-terminal SNARE motifs to the C-terminal anchors leads to the formation of the SNARE complex, which brings membranes into close proximity and results in final fusion. Participates in the calcium-dependent regulation of acrosomal exocytosis in sperm (PubMed: 23091057). Also plays an important role in the exocytosis of hormones such as insulin or glucagon-like peptide 1 (GLP-1) (By similarity).

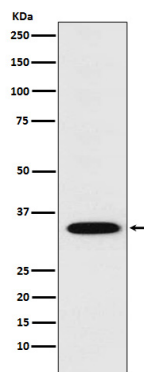
Cellular Location

Cytoplasmic vesicle, secretory vesicle, synaptic vesicle membrane {ECO:0000250|UniProtKB:O35526}; Single-pass type IV membrane protein {ECO:0000250|UniProtKB:O35526}. Synapse, synaptosome {ECO:0000250|UniProtKB:O35526}. Cell membrane {ECO:0000250|UniProtKB:P32851}. Note=Colocalizes with KCNB1 at the cell membrane. {ECO:0000250|UniProtKB:P32851}

Tissue Location

[Isoform 1]: Highly expressed in embryonic spinal cord and ganglia and in adult cerebellum and cerebral cortex

Images



Please note: All products are 'FOR RESEARCH USE ONLY. NOT FOR USE IN DIAGNOSTIC OR THERAPEUTIC PROCEDURES'.