

CXCL5 Rabbit mAb

Catalog # AP77022

Product Information

Application	WB, IF, ICC, IP
Primary Accession	P42830
Reactivity	Human
Host	Rabbit
Clonality	Monoclonal Antibody
Isotype	IgG
Conjugate	Unconjugated
Immunogen	A synthesized peptide derived from human CXCL5
Purification	Affinity Purified
Calculated MW	11972

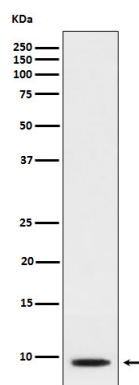
Additional Information

Gene ID	6374
Other Names	CXCL5
Dilution	WB~~1/500-1/1000 IF~~1:50~200 ICC~~N/A IP~~N/A
Format	Liquid in 10mM PBS, pH 7.4, 150mM sodium chloride, 0.05% BSA, 0.02% sodium azide and 50% glycerol.
Storage	Store at 4°C short term. Aliquot and store at -20°C long term. Avoid freeze/thaw cycles.

Protein Information

Name	CXCL5
Synonyms	ENA78, SCYB5
Function	Involved in neutrophil activation. In vitro, ENA-78(8-78) and ENA-78(9-78) show a threefold higher chemotactic activity for neutrophil granulocytes.
Cellular Location	Secreted.

Images



Please note: All products are 'FOR RESEARCH USE ONLY. NOT FOR USE IN DIAGNOSTIC OR THERAPEUTIC PROCEDURES'.