

TOMM22 Rabbit mAb

Catalog # AP77060

Product Information

Application	WB, IHC-P, IF, FC, ICC, IP
Primary Accession	Q9NS69
Reactivity	Human
Host	Rabbit
Clonality	Monoclonal Antibody
Isotype	IgG
Conjugate	Unconjugated
Immunogen	A synthesized peptide derived from human TOMM22
Purification	Affinity Purified
Calculated MW	15522

Additional Information

Gene ID	56993
Other Names	TOMM22
Dilution	WB~~1/500-1/1000 IHC-P~~N/A IF~~1:50~200 FC~~1:10~50 ICC~~N/A IP~~N/A
Format	Liquid in 10mM PBS, pH 7.4, 150mM sodium chloride, 0.05% BSA, 0.02% sodium azide and 50% glycerol.
Storage	Store at 4°C short term. Aliquot and store at -20°C long term. Avoid freeze/thaw cycles.

Protein Information

Name	TOMM22
Synonyms	TOM22
Function	Central receptor component of the translocase of the outer membrane of mitochondria (TOM) complex essential for the recognition and translocation of cytosolically synthesized mitochondrial preproteins (PubMed: 40080546). Together with the peripheral receptor TOMM20, functions as the transit peptide receptor and facilitates the movement of preproteins into the translocation pore (PubMed: 10982837). The TOM complex associates with the ion channel VDAC2 and PINK1 kinase at depolarized mitochondria, this interaction stabilizes PINK1 at the outer mitochondrial membrane and triggers downstream mitophagy by the recruitment of the E3 ubiquitin ligase PRKN (PubMed: 40080546). Required for the translocation across the mitochondrial outer membrane of cytochrome P450 monooxygenases (By

similarity).

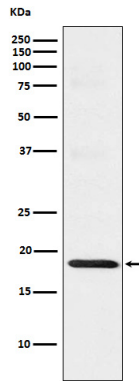
Cellular Location

Mitochondrion outer membrane; Single-pass membrane protein

Tissue Location

Ubiquitous.

Images



Please note: All products are 'FOR RESEARCH USE ONLY. NOT FOR USE IN DIAGNOSTIC OR THERAPEUTIC PROCEDURES'.