

# ORP150 Rabbit mAb

Catalog # AP77088

## Product Information

---

<b>Application</b>	WB, IHC-P, FC
<b>Primary Accession</b>	<a href="#">Q9Y4L1</a>
<b>Reactivity</b>	Rat, Human, Mouse
<b>Host</b>	Rabbit
<b>Clonality</b>	Monoclonal Antibody
<b>Isotype</b>	IgG
<b>Conjugate</b>	Unconjugated
<b>Immunogen</b>	A synthesized peptide derived from human ORP150
<b>Purification</b>	Affinity Chromatography
<b>Calculated MW</b>	111335

## Additional Information

---

<b>Gene ID</b>	10525
<b>Other Names</b>	HYOU1
<b>Dilution</b>	WB~~1/500-1/1000 IHC-P~~N/A FC~~1:10~50
<b>Format</b>	Liquid in 10mM PBS, pH 7.4, 150mM sodium chloride, 0.05% BSA, 0.02% sodium azide and 50% glycerol.
<b>Storage</b>	Store at 4°C short term. Aliquot and store at -20°C long term. Avoid freeze/thaw cycles.

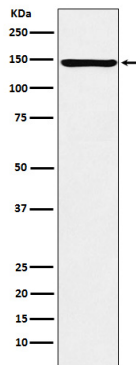
## Protein Information

---

<b>Name</b>	HYOU1
<b>Synonyms</b>	GRP170, HSPH4 {ECO:0000303 PubMed:186636}
<b>Function</b>	Has a pivotal role in cytoprotective cellular mechanisms triggered by oxygen deprivation. Promotes HSPA5/BiP-mediated ATP nucleotide exchange and thereby activates the unfolded protein response (UPR) pathway in the presence of endoplasmic reticulum stress (By similarity). May play a role as a molecular chaperone and participate in protein folding.
<b>Cellular Location</b>	Endoplasmic reticulum lumen.
<b>Tissue Location</b>	Highly expressed in tissues that contain well- developed endoplasmic reticulum and synthesize large amounts of secretory proteins. Highly expressed in liver and pancreas and lower expression in brain and kidney. Also expressed in macrophages within aortic atherosclerotic plaques, and in

## Images

---



Please note: All products are 'FOR RESEARCH USE ONLY. NOT FOR USE IN DIAGNOSTIC OR THERAPEUTIC PROCEDURES'.