

Galectin 8 Rabbit mAb

Catalog # AP77091

Product Information

Application	WB, IHC-P, IF, FC, ICC, IP
Primary Accession	O00214
Reactivity	Human
Host	Rabbit
Clonality	Monoclonal Antibody
Isotype	IgG
Conjugate	Unconjugated
Immunogen	A synthesized peptide derived from human Galectin 8
Purification	Affinity Chromatography
Calculated MW	35808

Additional Information

Gene ID	3964
Other Names	LGALS8
Dilution	WB~~1/500-1/1000 IHC-P~~N/A IF~~1:50~200 FC~~1:10~50 ICC~~N/A IP~~N/A
Format	Liquid in 10mM PBS, pH 7.4, 150mM sodium chloride, 0.05% BSA, 0.02% sodium azide and 50% glycerol.
Storage	Store at 4°C short term. Aliquot and store at -20°C long term. Avoid freeze/thaw cycles.

Protein Information

Name	LGALS8 (HGNC:6569)
Function	Beta-galactoside-binding lectin that acts as a sensor of membrane damage caused by infection and restricts the proliferation of infecting pathogens by targeting them for autophagy (PubMed: 22246324 , PubMed: 28077878). Detects membrane rupture by binding beta-galactoside ligands located on the luminal side of the endosome membrane; these ligands becoming exposed to the cytoplasm following rupture (PubMed: 22246324 , PubMed: 28077878). Restricts infection by initiating autophagy via interaction with CALCOCO2/NDP52 (PubMed: 22246324 , PubMed: 28077878). Required to restrict infection of bacterial invasion such as <i>S.typhimurium</i> (PubMed: 22246324). Also required to restrict infection of Picornaviridae viruses (PubMed: 28077878). Has a marked preference for 3'-O-sialylated and 3'-O-sulfated glycans (PubMed: 21288902).

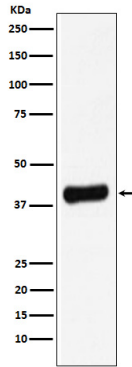
Cellular Location

Cytoplasmic vesicle. Cytoplasm, cytosol

Tissue Location

Ubiquitous. Selective expression by prostate carcinomas versus normal prostate and benign prostatic hypertrophy

Images



Please note: All products are 'FOR RESEARCH USE ONLY. NOT FOR USE IN DIAGNOSTIC OR THERAPEUTIC PROCEDURES'.