

WSTF Rabbit mAb

Catalog # AP77105

Product Information

Application	WB, FC
Primary Accession	Q9UIG0
Reactivity	Rat, Human, Mouse
Host	Rabbit
Clonality	Monoclonal Antibody
Isotype	IgG
Conjugate	Unconjugated
Immunogen	A synthesized peptide derived from human WSTF
Purification	Affinity Chromatography
Calculated MW	170903

Additional Information

Gene ID	9031
Other Names	BAZ1B
Dilution	WB~~1/500-1/1000 FC~~1:10~50
Format	Liquid in 10mM PBS, pH 7.4, 150mM sodium chloride, 0.05% BSA, 0.02% sodium azide and 50% glycerol.
Storage	Store at 4°C short term. Aliquot and store at -20°C long term. Avoid freeze/thaw cycles.

Protein Information

Name	BAZ1B
Synonyms	WBSC10, WBSCR10, WBSCR9, WSTF
Function	<p>Atypical tyrosine-protein kinase that plays a central role in chromatin remodeling and acts as a transcription regulator (PubMed:19092802). Involved in DNA damage response by phosphorylating 'Tyr-142' of histone H2AX (H2AXY142ph) (PubMed:19092802, PubMed:19234442). H2AXY142ph plays a central role in DNA repair and acts as a mark that distinguishes between apoptotic and repair responses to genotoxic stress (PubMed:19092802, PubMed:19234442). Regulatory subunit of the ATP-dependent WICH-1 and WICH-5 ISWI chromatin remodeling complexes, which form ordered nucleosome arrays on chromatin and facilitate access to DNA during DNA-templated processes such as DNA replication, transcription, and repair (PubMed:11980720, PubMed:28801535). Both complexes regulate the spacing of nucleosomes along the chromatin and have the ability to slide</p>

mononucleosomes to the center of a DNA template (PubMed:[28801535](#)). The WICH-1 ISWI chromatin remodeling complex has a lower ATP hydrolysis rate than the WICH-5 ISWI chromatin remodeling complex (PubMed:[28801535](#)). The WICH-5 ISWI chromatin-remodeling complex regulates the transcription of various genes, has a role in RNA polymerase I transcription (By similarity). Within the B-WICH complex has a role in RNA polymerase III transcription (PubMed:[16603771](#)). Mediates the recruitment of the WICH-5 ISWI chromatin remodeling complex to replication foci during DNA replication (PubMed:[15543136](#)).

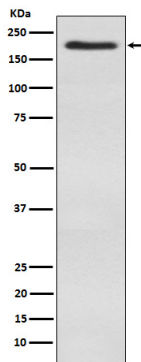
Cellular Location

Nucleus {ECO:0000255 | PROSITE-ProRule:PRU00063, ECO:0000255 | PROSITE-ProRule:PRU00475, ECO:0000269 | PubMed:11980720, ECO:0000269 | PubMed:15543136, ECO:0000269 | PubMed:16603771, ECO:0000269 | PubMed:25593309}. Note=Accumulates in pericentromeric heterochromatin during replication (PubMed:15543136). Co-localizes with PCNA at replication foci during S phase (PubMed:15543136). Co-localizes with SMARCA5/SNF2H at replication foci during late-S phase (PubMed:15543136). Also localizes to replication foci independently of SMARCA5/SNF2H and PCNA (PubMed:15543136). Localizes to sites of DNA damage (PubMed:25593309).

Tissue Location

Ubiquitously expressed with high levels of expression in heart, brain, placenta, skeletal muscle and ovary

Images



Please note: All products are 'FOR RESEARCH USE ONLY. NOT FOR USE IN DIAGNOSTIC OR THERAPEUTIC PROCEDURES'.