

# CENPC Rabbit mAb

Catalog # AP77106

## Product Information

---

<b>Application</b>	WB, IHC-P, FC, IP, ICC
<b>Primary Accession</b>	<a href="#">Q03188</a>
<b>Reactivity</b>	Human, Mouse, Rat
<b>Host</b>	Rabbit
<b>Clonality</b>	Monoclonal Antibody
<b>Calculated MW</b>	106834

## Additional Information

---

<b>Gene ID</b>	1060
<b>Other Names</b>	CENPC
<b>Dilution</b>	WB~~1/500-1/1000 IHC-P~~N/A FC~~1:10~50 IP~~N/A ICC~~N/A
<b>Format</b>	Liquid

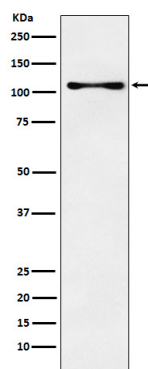
## Protein Information

---

<b>Name</b>	CENPC
<b>Synonyms</b>	CENPC1, ICEN7
<b>Function</b>	Component of the CENPA-NAC (nucleosome-associated) complex, a complex that plays a central role in assembly of kinetochore proteins, mitotic progression and chromosome segregation. The CENPA-NAC complex recruits the CENPA-CAD (nucleosome distal) complex and may be involved in incorporation of newly synthesized CENPA into centromeres. CENPC recruits DNA methylation and DNMT3B to both centromeric and pericentromeric satellite repeats and regulates the histone code in these regions.
<b>Cellular Location</b>	Nucleus. Chromosome, centromere, kinetochore. Chromosome, centromere. Note=Localizes exclusively in the kinetochore domain of centromeres.

## Images

---



Please note: All products are 'FOR RESEARCH USE ONLY. NOT FOR USE IN DIAGNOSTIC OR THERAPEUTIC PROCEDURES'.