

NCX1 Rabbit mAb

Catalog # AP77143

Product Information

Application	WB
Primary Accession	P32418
Reactivity	Rat, Human, Mouse
Host	Rabbit
Clonality	Monoclonal Antibody
Isotype	IgG
Conjugate	Unconjugated
Immunogen	A synthesized peptide derived from human NCX1
Purification	Affinity Chromatography
Calculated MW	108547

Additional Information

Gene ID	6546
Other Names	SLC8A1
Dilution	WB~~1/500-1/1000
Format	Liquid in 10mM PBS, pH 7.4, 150mM sodium chloride, 0.05% BSA, 0.02% sodium azide and 50% glycerol.
Storage	Store at 4°C short term. Aliquot and store at -20°C long term. Avoid freeze/thaw cycles.

Protein Information

Name	SLC8A1
Function	Mediates the exchange of one Ca(2+) ion against three to four Na(+) ions across the cell membrane, and thereby contributes to the regulation of cytoplasmic Ca(2+) levels and Ca(2+)-dependent cellular processes (PubMed: 11241183 , PubMed: 1374913 , PubMed: 1476165). Contributes to Ca(2+) transport during excitation-contraction coupling in muscle (PubMed: 11241183 , PubMed: 1374913 , PubMed: 1476165). In a first phase, voltage-gated channels mediate the rapid increase of cytoplasmic Ca(2+) levels due to release of Ca(2+) stores from the endoplasmic reticulum (PubMed: 11241183 , PubMed: 1374913 , PubMed: 1476165). SLC8A1 mediates the export of Ca(2+) from the cell during the next phase, so that cytoplasmic Ca(2+) levels rapidly return to baseline (PubMed: 11241183 , PubMed: 1374913 , PubMed: 1476165). Required for normal embryonic heart development and the onset of heart contractions (By similarity).

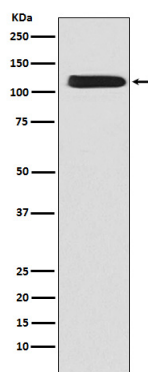
Cellular Location

Cell membrane; Multi-pass membrane protein

Tissue Location

Detected primarily in heart and at lower levels in brain (PubMed:1374913).
Expressed in cardiac sarcolemma, brain, kidney, liver, pancreas, skeletal muscle, placenta and lung (PubMed:1476165)

Images



Please note: All products are 'FOR RESEARCH USE ONLY. NOT FOR USE IN DIAGNOSTIC OR THERAPEUTIC PROCEDURES'.