

IL-2 Receptor alpha Rabbit mAb

Catalog # AP77153

Product Information

| | |
|--------------------------|---|
| Application | IHC-P, IF, ICC |
| Primary Accession | P01589 |
| Reactivity | Human |
| Host | Rabbit |
| Clonality | Monoclonal Antibody |
| Isotype | IgG |
| Conjugate | Unconjugated |
| Immunogen | A synthesized peptide derived from human CD25 |
| Purification | Affinity Chromatography |
| Calculated MW | 30819 |

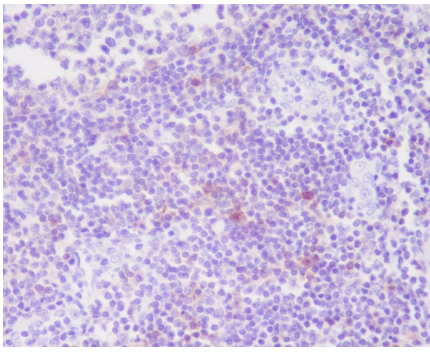
Additional Information

| | |
|--------------------|--|
| Gene ID | 3559 |
| Other Names | IL2RA |
| Dilution | IHC-P~~N/A IF~~1:50~200 ICC~~N/A |
| Format | Liquid in 10mM PBS, pH 7.4, 150mM sodium chloride, 0.05% BSA, 0.02% sodium azide and 50% glycerol. |
| Storage | Store at 4°C short term. Aliquot and store at -20°C long term. Avoid freeze/thaw cycles. |

Protein Information

| | |
|--------------------------|---|
| Name | IL2RA |
| Function | Receptor for interleukin-2. The receptor is involved in the regulation of immune tolerance by controlling regulatory T cells (TREGs) activity. TREGs suppress the activation and expansion of autoreactive T-cells. |
| Cellular Location | Membrane; Single-pass type I membrane protein. |

Images



Please note: All products are 'FOR RESEARCH USE ONLY. NOT FOR USE IN DIAGNOSTIC OR THERAPEUTIC PROCEDURES'.