

SMURF2 Rabbit mAb

Catalog # AP77158

Product Information

Application	WB
Primary Accession	Q9HAU4
Reactivity	Rat, Human, Mouse
Host	Rabbit
Clonality	Monoclonal Antibody
Isotype	IgG
Conjugate	Unconjugated
Immunogen	A synthesized peptide derived from human SMURF 2
Purification	Affinity Chromatography
Calculated MW	86196

Additional Information

Gene ID	64750
Other Names	SMURF2
Dilution	WB~~1/500-1/1000
Format	Liquid in 10mM PBS, pH 7.4, 150mM sodium chloride, 0.05% BSA, 0.02% sodium azide and 50% glycerol.
Storage	Store at 4°C short term. Aliquot and store at -20°C long term. Avoid freeze/thaw cycles.

Protein Information

Name	SMURF2 (HGNC:16809)
Function	E3 ubiquitin-protein ligase which accepts ubiquitin from an E2 ubiquitin-conjugating enzyme in the form of a thioester and then directly transfers the ubiquitin to targeted substrates (PubMed: 11016919). Interacts with SMAD7 to trigger SMAD7-mediated transforming growth factor beta/TGF-beta receptor ubiquitin-dependent degradation, thereby down-regulating TGF-beta signaling (PubMed: 11163210 , PubMed: 12717440 , PubMed: 21791611). In addition, interaction with SMAD7 activates autocatalytic degradation, which is prevented by interaction with AIMP1 (PubMed: 18448069). Also forms a stable complex with TGF-beta receptor-mediated phosphorylated SMAD1, SMAD2 and SMAD3, and targets SMAD1 and SMAD2 for ubiquitination and proteasome-mediated degradation (PubMed: 11016919 , PubMed: 11158580 , PubMed: 11389444). SMAD2 may recruit substrates, such as SNON, for ubiquitin-dependent degradation (PubMed: 11389444). Negatively regulates TGFB1-induced

epithelial-mesenchymal transition and myofibroblast differentiation
(PubMed:[30696809](#)).

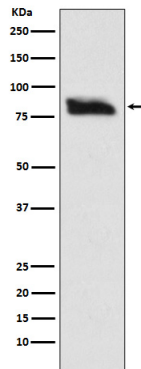
Cellular Location

Nucleus. Cytoplasm. Cell membrane. Membrane raft. Note=Cytoplasmic in the presence of SMAD7. Colocalizes with CAV1, SMAD7 and TGF-beta receptor in membrane rafts

Tissue Location

Widely expressed.

Images



Please note: All products are 'FOR RESEARCH USE ONLY. NOT FOR USE IN DIAGNOSTIC OR THERAPEUTIC PROCEDURES'.