

CCR8 Rabbit mAb

Catalog # AP77177

Product Information

Application	WB, IF, ICC
Primary Accession	P51685
Reactivity	Rat, Human, Mouse
Host	Rabbit
Clonality	Monoclonal Antibody
Isotype	IgG
Conjugate	Unconjugated
Immunogen	A synthesized peptide derived from human CCR8
Purification	Affinity Chromatography
Calculated MW	40844

Additional Information

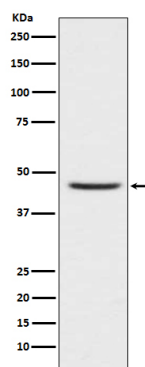
Gene ID	1237
Other Names	CCR8
Dilution	WB~~1/500-1/1000 IF~~1:50~200 ICC~~N/A
Format	Liquid in 10mM PBS, pH 7.4, 150mM sodium chloride, 0.05% BSA, 0.02% sodium azide and 50% glycerol.
Storage	Store at 4°C short term. Aliquot and store at -20°C long term. Avoid freeze/thaw cycles.

Protein Information

Name	CCR8
Synonyms	CKRL1, CMKBR8, CMKBRL2
Function	G protein-coupled receptor that can bind a variety of chemokines, such as CCL1, CCL8, CCL16, CCL18 (PubMed: 23999500 , PubMed: 35041514). Regulates monocyte and eosinophil chemotaxis. Undergoes internalization upon CCL18 binding, leading to induced migration and calcium flux of highly polarized Th2 cells (PubMed: 23999500). In microglial cells, promotes phagocytosis with CCL18 through NF-kappa-B and Src signaling pathways (PubMed: 35041514). Stimulation of the CCL1-CCR8 signaling axis protects the gut from acute intestinal damage (By similarity).
Cellular Location	Cell membrane; Multi-pass membrane protein
Tissue Location	Expressed in unstimulated CD4(+) and CD8(+) T-cells and polymorphonuclear

cells.

Images



Please note: All products are 'FOR RESEARCH USE ONLY. NOT FOR USE IN DIAGNOSTIC OR THERAPEUTIC PROCEDURES'.