

Calpain 2 Rabbit mAb

Catalog # AP77186

Product Information

Application	WB
Primary Accession	P17655
Reactivity	Rat, Human, Mouse
Host	Rabbit
Clonality	Monoclonal Antibody
Isotype	IgG
Conjugate	Unconjugated
Immunogen	A synthesized peptide derived from human Calpain 2
Purification	Affinity Chromatography
Calculated MW	79995

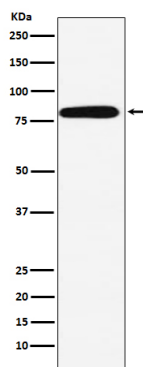
Additional Information

Gene ID	824
Other Names	CAPN2
Dilution	WB~~1/500-1/1000
Format	Liquid in 10mM PBS, pH 7.4, 150mM sodium chloride, 0.05% BSA, 0.02% sodium azide and 50% glycerol.
Storage	Store at 4°C short term. Aliquot and store at -20°C long term. Avoid freeze/thaw cycles.

Protein Information

Name	CAPN2
Synonyms	CANPL2
Function	Calcium-regulated non-lysosomal thiol-protease which catalyzes limited proteolysis of substrates involved in cytoskeletal remodeling and signal transduction. Proteolytically cleaves MYOC at 'Arg-226' (PubMed: 17650508). Proteolytically cleaves CPEB3 following neuronal stimulation which abolishes CPEB3 translational repressor activity, leading to translation of CPEB3 target mRNAs (By similarity).
Cellular Location	Cytoplasm. Cell membrane. Note=Translocates to the plasma membrane upon Ca(2+) binding
Tissue Location	Ubiquitous.

Images



Please note: All products are 'FOR RESEARCH USE ONLY. NOT FOR USE IN DIAGNOSTIC OR THERAPEUTIC PROCEDURES'.