

CD39 Rabbit mAb

Catalog # AP77189

Product Information

Application	WB
Primary Accession	P49961
Reactivity	Rat, Human, Mouse
Host	Rabbit
Clonality	Monoclonal Antibody
Isotype	IgG
Conjugate	Unconjugated
Immunogen	A synthesized peptide derived from human CD39
Purification	Affinity Chromatography
Calculated MW	57965

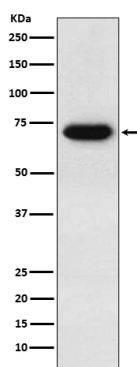
Additional Information

Gene ID	953
Other Names	ENTPD1
Dilution	WB~~1/500-1/1000
Format	Liquid in 10mM PBS, pH 7.4, 150mM sodium chloride, 0.05% BSA, 0.02% sodium azide and 50% glycerol.
Storage	Store at 4°C short term. Aliquot and store at -20°C long term. Avoid freeze/thaw cycles.

Protein Information

Name	ENTPD1 (HGNC:3363)
Function	Catalyzes the hydrolysis of both di- and triphosphate nucleotides (NDPs and NTPs) and hydrolyze NTPs to nucleotide monophosphates (NMPs) in two distinct successive phosphate-releasing steps, with NDPs as intermediates and participates in the regulation of extracellular levels of nucleotides (Probable) (PubMed: 8529670 , PubMed: 8626624 , PubMed: 8955160 , PubMed: 8996251). By hydrolyzing proinflammatory ATP and platelet-activating ADP to AMP, it blocks platelet aggregation and supports blood flow (PubMed: 8955160 , PubMed: 8996251).
Cellular Location	Membrane; Multi-pass membrane protein. Membrane, caveola
Tissue Location	Expressed primarily on activated lymphoid cells (PubMed:7930580). Also expressed in endothelial tissues (PubMed:8955160). Highly expressed in placenta, lung, skeletal muscle, kidney (PubMed:8955160).

Images



Please note: All products are 'FOR RESEARCH USE ONLY. NOT FOR USE IN DIAGNOSTIC OR THERAPEUTIC PROCEDURES'.