

Leptin Receptor Rabbit mAb

Catalog # AP77214

Product Information

Application	WB
Primary Accession	P48357
Reactivity	Rat, Human, Mouse
Host	Rabbit
Clonality	Monoclonal Antibody
Isotype	IgG
Conjugate	Unconjugated
Immunogen	A synthesized peptide derived from human Leptin Receptor
Purification	Affinity Chromatography
Calculated MW	132494

Additional Information

Gene ID	3953
Other Names	LEPR
Dilution	WB~~1/500-1/1000
Format	Liquid in 10mM PBS, pH 7.4, 150mM sodium chloride, 0.05% BSA, 0.02% sodium azide and 50% glycerol.
Storage	Store at 4°C short term. Aliquot and store at -20°C long term. Avoid freeze/thaw cycles.

Protein Information

Name	LEPR
Synonyms	DB, OBR
Function	Receptor for hormone LEP/leptin (Probable) (PubMed: 22405007). On ligand binding, mediates LEP central and peripheral effects through the activation of different signaling pathways such as JAK2/STAT3 and MAPK cascade/FOS. In the hypothalamus, LEP acts as an appetite- regulating factor that induces a decrease in food intake and an increase in energy consumption by inducing anorexigenic factors and suppressing orexigenic neuropeptides, also regulates bone mass and secretion of hypothalamo-pituitary-adrenal hormones (By similarity) (PubMed: 9537324). In the periphery, increases basal metabolism, influences reproductive function, regulates pancreatic beta-cell function and insulin secretion, is pro-angiogenic and affects innate and adaptive immunity (PubMed: 12504075 , PubMed: 25060689 , PubMed: 8805376). Control of energy homeostasis and melanocortin

production (stimulation of POMC and full repression of AgRP transcription) is mediated by STAT3 signaling, whereas distinct signals regulate NPY and the control of fertility, growth and glucose homeostasis. Involved in the regulation of counter-regulatory response to hypoglycemia by inhibiting neurons of the parabrachial nucleus. Has a specific effect on T lymphocyte responses, differentially regulating the proliferation of naive and memory T-cells. Leptin increases Th1 and suppresses Th2 cytokine production (By similarity).

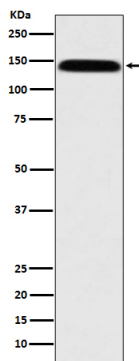
Cellular Location

Cell membrane; Single-pass type I membrane protein. Basolateral cell membrane

Tissue Location

Isoform A is expressed in fetal liver and in hematopoietic tissues and choroid plexus. In adults highest expression in heart, liver, small intestine, prostate and ovary. Low level in lung and kidney. Isoform B is highly expressed in hypothalamus, but also in skeletal muscle. Detected in fundic and antral epithelial cells of the gastric mucosa (PubMed:19159218). Isoform B and isoform A are expressed by NK cells (at protein level) (PubMed:12504075)

Images



Please note: All products are 'FOR RESEARCH USE ONLY. NOT FOR USE IN DIAGNOSTIC OR THERAPEUTIC PROCEDURES'.