

GRP94 Rabbit mAb

Catalog # AP77224

Product Information

Application	WB, IHC-P, IF, ICC
Primary Accession	P14625
Reactivity	Human, Mouse
Host	Rabbit
Clonality	Monoclonal Antibody
Isotype	IgG
Conjugate	Unconjugated
Immunogen	A synthesized peptide derived from human GRP94
Purification	Affinity Chromatography
Calculated MW	92469

Additional Information

Gene ID	7184
Other Names	HSP90B1
Dilution	WB~~1/500-1/1000 IHC-P~~N/A IF~~1:50~200 ICC~~N/A
Format	Liquid in 10mM PBS, pH 7.4, 150mM sodium chloride, 0.05% BSA, 0.02% sodium azide and 50% glycerol.
Storage	Store at 4°C short term. Aliquot and store at -20°C long term. Avoid freeze/thaw cycles.

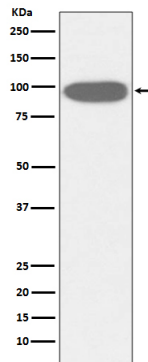
Protein Information

Name	HSP90B1 {ECO:0000303 PubMed:39509507, ECO:0000312 HGNC:HGNC:12028}
Function	ATP-dependent chaperone involved in the processing of proteins in the endoplasmic reticulum, regulating their transport (PubMed: 23572575 , PubMed: 39509507). Together with MESD, acts as a modulator of the Wnt pathway by promoting the folding of LRP6, a coreceptor of the canonical Wnt pathway (PubMed: 23572575 , PubMed: 39509507). When associated with CNPY3, required for proper folding of Toll-like receptors (PubMed: 11584270). Promotes folding and trafficking of TLR4 to the cell surface (PubMed: 11584270). May participate in the unfolding of cytosolic leaderless cargos (lacking the secretion signal sequence) such as the interleukin 1/IL-1 to facilitate their translocation into the ERGIC (endoplasmic reticulum- Golgi intermediate compartment) and secretion; the translocation process is mediated by the cargo receptor TMED10 (PubMed: 32272059).

Cellular Location

Endoplasmic reticulum lumen. Sarcoplasmic reticulum lumen
{ECO:0000250|UniProtKB:P41148}. Melanosome Note=Identified by mass spectrometry in melanosome fractions from stage I to stage IV.

Images



Please note: All products are 'FOR RESEARCH USE ONLY. NOT FOR USE IN DIAGNOSTIC OR THERAPEUTIC PROCEDURES'.