

FKBP12 Rabbit mAb

Catalog # AP77229

Product Information

| | |
|--------------------------|---|
| Application | WB, IF, ICC |
| Primary Accession | P62942 |
| Reactivity | Rat, Human, Mouse |
| Host | Rabbit |
| Clonality | Monoclonal Antibody |
| Isotype | IgG |
| Conjugate | Unconjugated |
| Immunogen | A synthesized peptide derived from human FKBP12 |
| Purification | Affinity Chromatography |
| Calculated MW | 11951 |

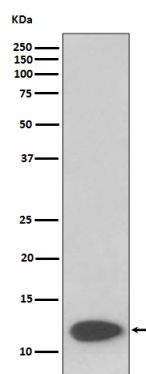
Additional Information

| | |
|--------------------|--|
| Gene ID | 2280 |
| Other Names | FKBP1A |
| Dilution | WB~~1/500-1/1000 IF~~1:50~200 ICC~~N/A |
| Format | Liquid in 10mM PBS, pH 7.4, 150mM sodium chloride, 0.05% BSA, 0.02% sodium azide and 50% glycerol. |
| Storage | Store at 4°C short term. Aliquot and store at -20°C long term. Avoid freeze/thaw cycles. |

Protein Information

| | |
|--------------------------|---|
| Name | FKBP1A |
| Synonyms | FKBP1, FKBP12 |
| Function | Keeps in an inactive conformation TGFBR1, the TGF-beta type I serine/threonine kinase receptor, preventing TGF-beta receptor activation in absence of ligand. Recruits SMAD7 to ACVR1B which prevents the association of SMAD2 and SMAD3 with the activin receptor complex, thereby blocking the activin signal. May modulate the RYR1 calcium channel activity. PPIases accelerate the folding of proteins. It catalyzes the cis-trans isomerization of proline imidic peptide bonds in oligopeptides. |
| Cellular Location | Cytoplasm, cytosol. Sarcoplasmic reticulum membrane {ECO:0000250 UniProtKB:P62943}; Peripheral membrane protein {ECO:0000250 UniProtKB:P62943}; Cytoplasmic side {ECO:0000250 UniProtKB:P62943} |

Images



Please note: All products are 'FOR RESEARCH USE ONLY. NOT FOR USE IN DIAGNOSTIC OR THERAPEUTIC PROCEDURES'.