

Perilipin 1 Rabbit mAb

Catalog # AP77232

Product Information

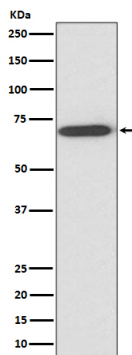
Application	WB, IF, ICC
Primary Accession	O60240
Reactivity	Human, Mouse
Host	Rabbit
Clonality	Monoclonal Antibody
Isotype	IgG
Conjugate	Unconjugated
Immunogen	A synthesized peptide derived from human Perilipin A
Purification	Affinity Chromatography
Calculated MW	56 KDa

Additional Information

Other Names	PLIN1
Dilution	WB~~1/500-1/1000 IF~~1:50~200 ICC~~N/A
Format	Liquid in 10mM PBS, pH 7.4, 150mM sodium chloride, 0.05% BSA, 0.02% sodium azide and 50% glycerol.
Storage	Store at 4°C short term. Aliquot and store at -20°C long term. Avoid freeze/thaw cycles.

Protein Information

Images



Please note: All products are 'FOR RESEARCH USE ONLY. NOT FOR USE IN DIAGNOSTIC OR THERAPEUTIC PROCEDURES'.