

# beta 2 Adrenergic Receptor Rabbit mAb

Catalog # AP77247

## Product Information

---

|                          |   |
|--------------------------|---|
| <b>Application</b>       | WB, IHC-P, IP   |
| <b>Primary Accession</b> | <a href="#">P07550</a>  |
| <b>Reactivity</b>        | Rat, Human, Mouse   |
| <b>Host</b>              | Rabbit  |
| <b>Clonality</b>         | Monoclonal Antibody   |
| <b>Isotype</b>           | IgG   |
| <b>Conjugate</b>         | Unconjugated  |
| <b>Immunogen</b>         | A synthesized peptide derived from human beta 2 Adrenergic Receptor |
| <b>Purification</b>      | Affinity Chromatography   |
| <b>Calculated MW</b>     | 46459   |

## Additional Information

---

|                    |  |
|--------------------|--|
| <b>Gene ID</b>     | 154  |
| <b>Other Names</b> | ADRB2  |
| <b>Dilution</b>    | WB~~1/500-1/1000 IHC-P~~N/A IP~~N/A  |
| <b>Format</b>      | Liquid in 10mM PBS, pH 7.4, 150mM sodium chloride, 0.05% BSA, 0.02% sodium azide and 50% glycerol. |
| <b>Storage</b>     | Store at 4°C short term. Aliquot and store at -20°C long term. Avoid freeze/thaw cycles.           |

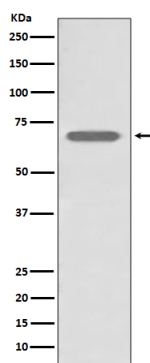
## Protein Information

---

|                          |  |
|--------------------------|--|
| <b>Name</b>              | ADRB2  |
| <b>Synonyms</b>          | ADRB2R, B2AR   |
| <b>Function</b>          | Beta-adrenergic receptors mediate the catecholamine-induced activation of adenylate cyclase through the action of G proteins. The beta-2-adrenergic receptor binds epinephrine with an approximately 30- fold greater affinity than it does norepinephrine.  |
| <b>Cellular Location</b> | Cell membrane; Multi-pass membrane protein. Early endosome. Golgi apparatus. Note=Colocalizes with VHL at the cell membrane (PubMed:19584355). Activated receptors are internalized into endosomes prior to their degradation in lysosomes (PubMed:20559325) Activated receptors are also detected within the Golgi apparatus (PubMed:27481942). |

## Images

---



Please note: All products are 'FOR RESEARCH USE ONLY. NOT FOR USE IN DIAGNOSTIC OR THERAPEUTIC PROCEDURES'.